



## Fact Sheet – EAST Miami

Trendy and tropical, EAST Miami brings a playful lifestyle hotel with an Asian twist to downtown Miami. Located in Brickell City Centre, EAST Miami is the first Swire Hotels property in North America, offering a hotel experience where guests can work playfully and play productively.



## Rooms and Residences

EAST Miami offers 352 guest rooms to include eight suites and 89 residences. Ranging in size from 300 to 1,800 square feet, every contemporary room, suite, and residence suite features a balcony with views of the Miami skyline and Biscayne Bay.

### Room Features

- Floor-to-ceiling windows
- Walk-in rain shower
- In-room drinking water filter system in all guest rooms
- 55" 4K Smart TV
- Complimentary WiFi
- Fully equipped kitchen and laundry facilities in Residence
- Complimentary espresso machine and selection of teas and infusions
- Special access rooms available

### Room Sizes

|                   | sqf     |
|-------------------|---------|
| Urban King        | 300-350 |
| Urban Plus King   | 300-350 |
| Urban Double      | 300-350 |
| Urban Plus Double | 300-350 |
| Corner King       | 410     |
| Corner Plus King  | 410     |
| Bay King          | 410     |
| Bay Plus King     | 410     |



|                              |           |
|------------------------------|-----------|
| One Bedroom Suite            | 640-750   |
| EAST Suite                   | 1600      |
| The Workshop Residence       | 1800      |
| Jr Residence Suite           | 750       |
| One Bedroom Residence        | 1040      |
| Two Bedroom Residence        | 1197      |
| Two Bedroom Corner Residence | 1040-1197 |
| Three Bedroom Residence      | 1745      |



## Restaurants and Bars

### Sugar

An award-winning rooftop and lounge, Sugar is Miami's ultimate destination. Attracting locals and visitors with its hip and happening vibe, Sugar is intimately nested 40 floors up at the top of EAST Miami, in the heart of Brickell. While overlooking Miami's vibrant skyline and surrounded by the city lights at night, Sugar also offers a stunning backdrop of sunset and moonrise views. Accompanied by DJ sets and paired with decadent cocktails, sushi, and other Asian inspired bites, it is the place to meet and be seen.

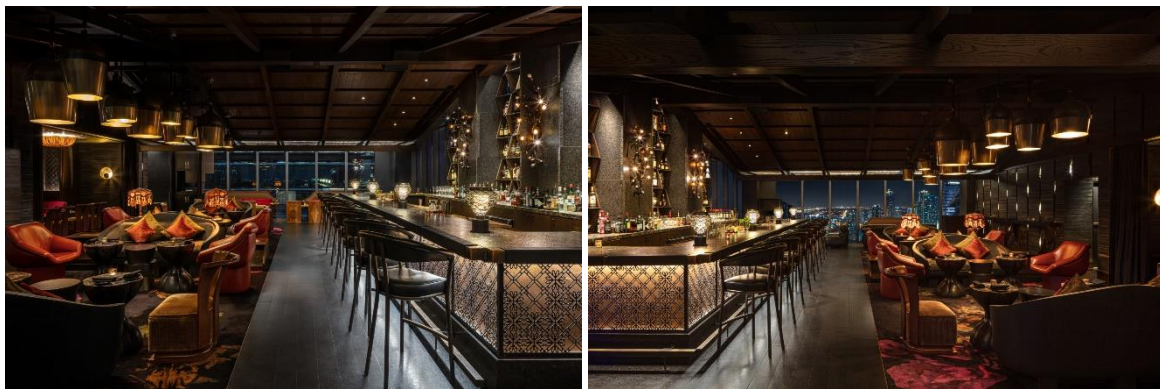




## Tea Room

Inspired by EAST Miami's Asian roots and located high above the bustling streets of Miami's metropolitan Brickell neighborhood, Tea Room is an enchanting cocktail lounge and speakeasy. Hidden behind a black door, Tea Room serves creative cocktails, live music and Miami's only Asian Night Brunch.

Stylishly designed and beautifully appointed, guests are instantly transported into a sophisticated Hong Kong-inspired cocktail lounge the moment they step inside.



## Quinto

Loyal to its roots, our authentic Latin American restaurant is a staple in Brickell like no other. Intimately nested on the 5th floor of EAST Miami and overlooking Brickell City Centre and the Miami skyline, and known for its unique open-fire parrilla and wood-fired oven, our signature restaurant brings wholesome flavors to the table with the freshest catch in multi-atmosphere dining spaces and one of the most spectacular lush outdoor terraces in Miami.





## Domain

Bright and lofty, Domain is our laidback café, lobby lounge and co-working space that transforms into a sleek bar after sunset. Give your mornings a boost with a fresh coffee and pastries, fuel up on salads and sandwiches in the afternoon, and enjoy a crisp rosé or smoky old-fashioned in the evenings.



## Meetings & Events

EAST Miami offers 20,000 square feet of event space and outdoor venues. All event spaces feature floor-to-ceiling windows, complimentary WiFi access, cutting edge audio-visual equipment, and technical support.

### The Crush

The Crush, located on the 39th floor, is a ballroom ideally suited for large events with 3,300 square feet of customizable events space with floor-to-ceiling windows that offer a 270 degree panoramic view of Biscayne Bay and Miami's skyline. A stylish pre-function area also offers attractive views and an anchored multi-functional bar.





### **Rise**

With Biscayne Bay views and high ceilings, Rise is a bright and modern destination for your next meeting. Located on the 38th floor, Rise has 1,600 square feet of flexible events space that can be customized to your exact needs. Need tech support? Our in-house audio visual provider has it covered with all the latest gadgets.



### **Set**

Lofty ceilings and amazing city views make Set a stimulating and inspiring place for meetings. Located on the 38th floor, Set is a corner room with three walls of floor-to-ceiling windows and 1,600 square feet of flexible events space. This room is opposite Rise which offers several options for clients looking to book larger programs.



### **High Noon**

Located on the 38th floor with impressive views of Miami's skyline and Biscayne Bay, the boardroom High Noon is anything but boring. With 480 square feet of events space and floor-to-ceiling windows, this unique workspace comes with all the latest tech.





### **Workshop**

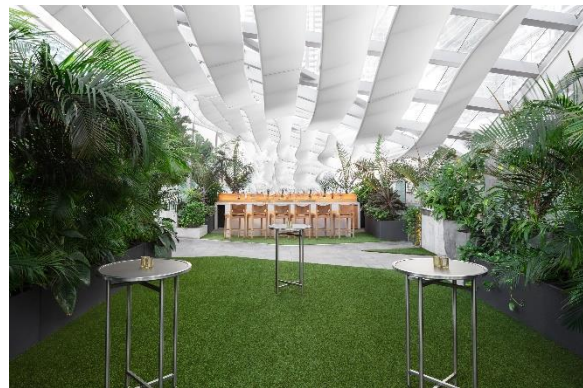
The four Workshops located on the 6th floor offer a dedicated space that is ideal for planning intimate meetings and gatherings. Ranging from 640 to a combined 1,500 square feet – each space is bright and modern with a built-in credenza and floor-to-ceiling windows that allow in an abundance of natural light.



### **Outdoor Venues**

The Shrubbery and Pool & Deck offer a flexible space that combines lush greenery with an energetic urban ambiance in the middle of downtown Miami.

The Shrubbery is a suspended deck nestled under the soaring Climate Ribbon with room for up to 80 guests to mix and mingle among the palms and exotic plants. Meanwhile the colorful and vibrant Pool & Deck includes an architectural wall, natural runway surrounded by the four pools and projection capabilities.



## **Wellness**

### **BEAST**

The hotel's gym, BEAST (Body by EAST), features the latest gym equipment and is accessible 24 hours a day. There are free weights, resistance machines, plus mats and plenty of stretching space in the EASTudio next door.

### **Pool & Deck**

The 10,000 square-foot outdoor Pool & Deck area showcases four unique pool experiences – a lap pool, spa pool, cold plunge and hot tub. Our cabanas also offer an exclusive sanctuary amidst the Miami Sunshine.



## Smoke Free

All of the 352 rooms and residences are non-smoking.



## Art

Art is a huge component for all EAST hotels and guests can see celebrated artwork and installations throughout EAST Miami, courtesy of Indiewalls, an innovative art curating agency. Working closely with local and national artists, the design team hand-selected works of art including sculptures, paintings, and photographs to highlight Miami's characteristics as a beautiful port town drenched in a palette of blues, yellows, whites, and ambers.

## Green Measures

Swire Hotels is committed to making a positive impact on the environment implementing new and innovative programs to strengthen the priority given to the sustainable operation of its hotels.

### 1. Site Development - maximize open space.

Our pool & deck area was designed with trees and lots of vegetation. It is complemented by the Climate Ribbon (see link below for more info), an architectural feature designed by renowned British architect Hugh Dutton, to capture the trade winds from the ocean which helps to bring a natural breeze into the property and shades the facades of shops and terraces directly exposed to strong sunlight.

<https://www.hda-paris.com/project/climate-ribbon-tm-miami-usa/>

### 2. Water efficiency - reduction of water use.

Throughout the property we have installed a smart pump system that regulates water pressure including an electronic water loss prevention system in case of any leaks or pipe damage. This allows us to reduce water consumption by using efficient fixtures in all units. EAST Miami also collects and reuses rain water



for the cooling tower and all landscaping applications.

### **3. In-room Drinking Water Faucet System**

To reduce the waste of bottled water, EAST Miami has installed a filtered drinking water faucet system in all guest rooms. The system not only creates significant convenience for guests who seek healthy hydrated lifestyle, but also greatly reduces the hotel's operational cost.

### **4. Food Waste Management**

EAST Miami has two food digestors to manage the food waste from Quinto. It starts with aerobic digestion with microbial mixtures and then the waste breaks down into smaller pieces, eventually transforming into a liquid, which will be filtered safely into the existing plumbing infrastructure. These machines significantly decrease the frequency where trucks are needed to transport waste, thus reducing harmful emissions.

### **5. Central Refrigerant Management**

We have installed efficient chillers with low pressure refrigerant to save energy.

### **6. Minimum Energy performance.**

At EAST Miami, all of the light bulbs are LED. The hotel is also equipped with Lutron and INNCOM light control systems in the rooms which utilize Occupancy Sensors to conserve energy.

### **7. Optimizing Energy Performance.**

EAST Miami has installed a Building Management System and an Elevator Management System to maximize efficiency and minimize energy consumption on a daily basis.

### **8. Outdoor Air Delivery Control.**

By Installing ERUs (Energy Recovery Units) it allows the unit to act like air scrubbers to reuse & recycle the cooled air in the hotel by pushing it back into the hallways through Advanced Filtering Systems.

### **9. Daylight and Energy Efficiency.**

At EAST Miami, 90% of the Hotel has 12-foot glass floor-to-ceiling windows at the East, West and South sides of the property. These windows allow us to maximize energy efficiency by introducing natural light into the room during daytime.





## Location

Located in the heart of downtown Miami and just 8 miles from the airport, EAST Miami is surrounded by artsy, creative and glamorous neighborhoods and well connected by transit routes. EAST Miami is directly connected to The Shops at Brickell City Centre, offering premium shopping, dining, and entertainment. The city's famous street art, great shopping, short walks to the Miami River and Biscayne Bay, and a melting pot of different cuisines are just around the corner.

## Our Contacts

EAST Miami  
788 Brickell Plaza  
Miami, FL 33131  
USA  
[www.easthotels.com](http://www.easthotels.com)



EASTMiami



eastmia

A member of Preferred Hotels & Resorts