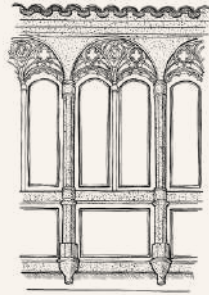




PALMA DE MALLORCA

PORTELLA

A house next to the Arab Baths



Portella is a typical Palma house with Moorish and Venetian Renaissance influences, located in the historic center next to the Arab Baths. Built in the 17th century, it has been home to aristocrats, merchants, and artists, including painter Joaquín Torrents Lladó. More than a hotel, it is a secret, intimate retreat with no signage, where time seems to stand still. Its architecture preserves the building's original essence with local materials, blending classic aesthetics with a bohemian soul. At its heart, a lush courtyard offers a peaceful escape in the midst of the city.

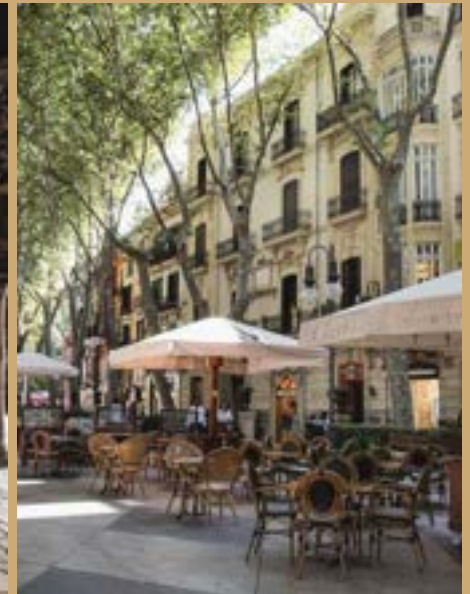
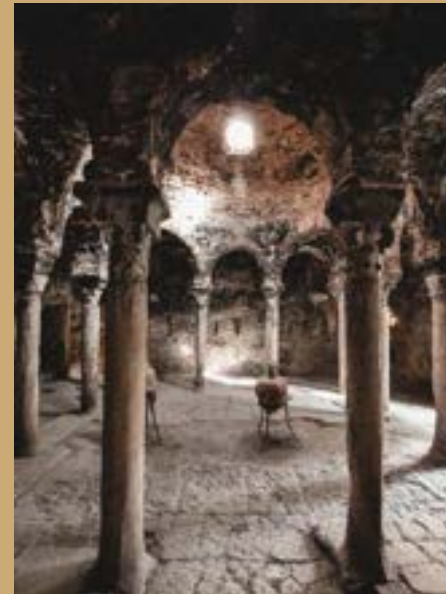
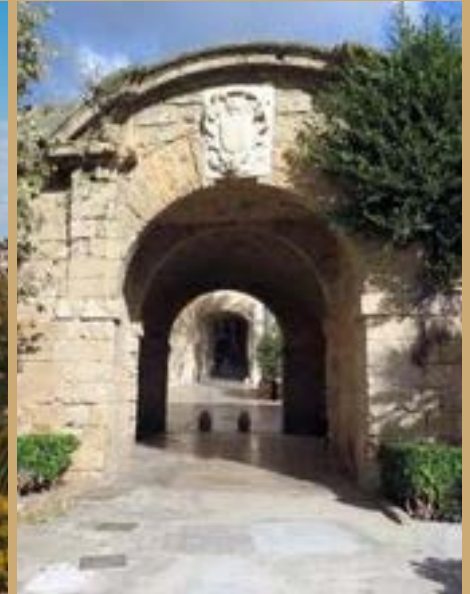


Location

CARRER DE LA PORTELLA, 9
CP - 07001 PALMA DE MALLORCA
ISLAS BALEARES, ESPAÑA



Located in one of the former entrances to the walled city of Palma, Calle de la Portella, one of Palma's most iconic streets, lined with historic mansions. Just steps from the Cathedral, city walls, shopping areas, and only a 5-minute walk from the sea, it still retains the charm and tranquility of a historic neighborhood.



The Team Behind Portella



FESTEN

Founded by Charlotte de Tonnac and Hugo Sauzay, this duo has already carried out a wide variety of world-renowned architecture and interior design works, placing them on the AD 100 list.



GORDIOLA

Founded in 1719, this family business with 8 generations still active has been hand-blowing glass for over 300 years and is part of the culture and tradition of Mallorca's homes.

The Team Behind Portella



Reynés
Architecture
Studio

GRAS

GRAS

GRAS Reynés Arquitectos was founded in 2007 by architect Guillermo Reynés. Headquartered in Palma de Mallorca, GRAS develops projects mainly in Mallorca, Spain, although with a growing global presence with ongoing projects in several countries.

OTHER COLLABORATORS

To bring Portella to life, we have also been assisted by collaborators such as Loro Piana, Galerie François, Ido Diffusion, Blasco, Vista Alegre, Medina Mallorca and local artisans.



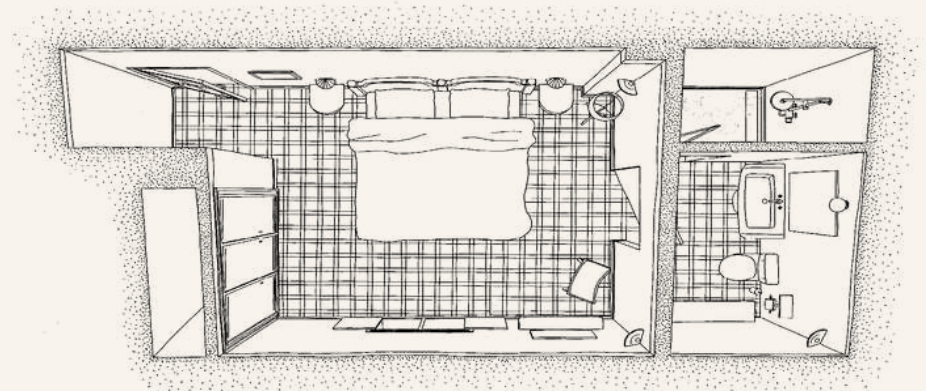


ROOMS



Cozy Double

SPACE 19 – 21 M² | CAPACITY FOR 2 PEOPLE



These cozy rooms are our smallest category. Compact and thoughtfully designed yet well-equipped with premium amenities. Perfect for short stays or solo travelers. Connect with another room to create a two-bedroom apartment. Some have quick access to the interior patio, while others have sloping ceilings. I



ROOM FEATURES

AIR CONDITIONING

SMART TV

COMPLIMENTARY WIFI

BATHROOM AMENITIES

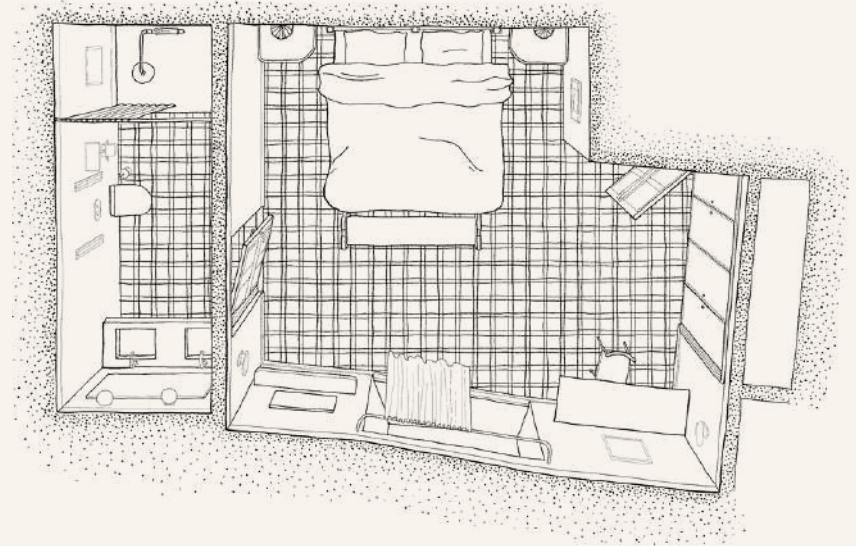
MINIBAR





Double

SPACE 19 – 27 M² | CAPACITY FOR 2 PEOPLE



Perfect for couple getaways. Located on the noble floor With views of the charming Can Serra Street or the hotel's serene interior patio. It can be connected to create spacious two-bedroom apartments for families.



ROOM FEATURES

AIR CONDITIONING

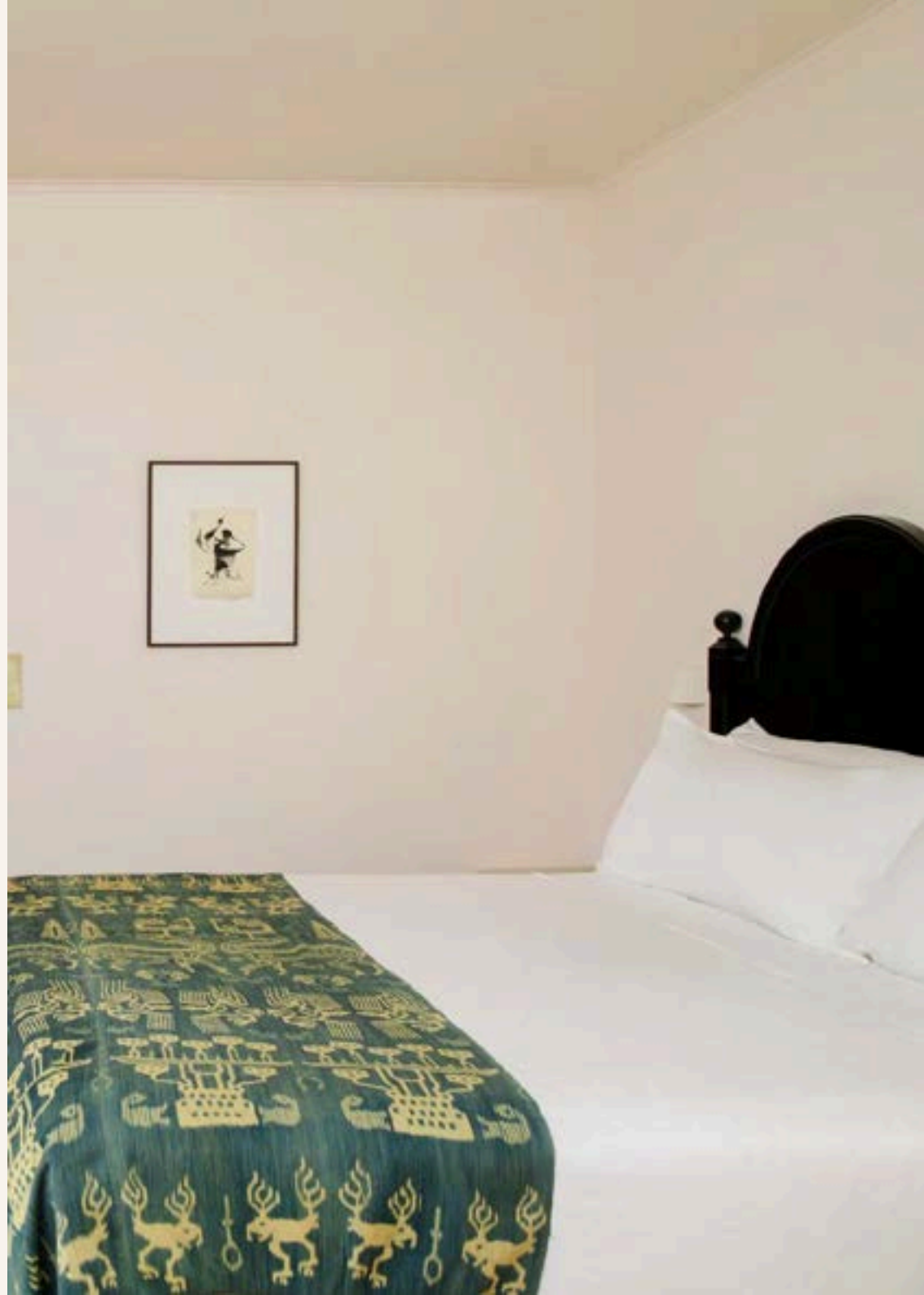
SMART TV

CEILING FAN

MINIBAR

COMPLIMENTARY WIFI

BATHROOM AMENITIES

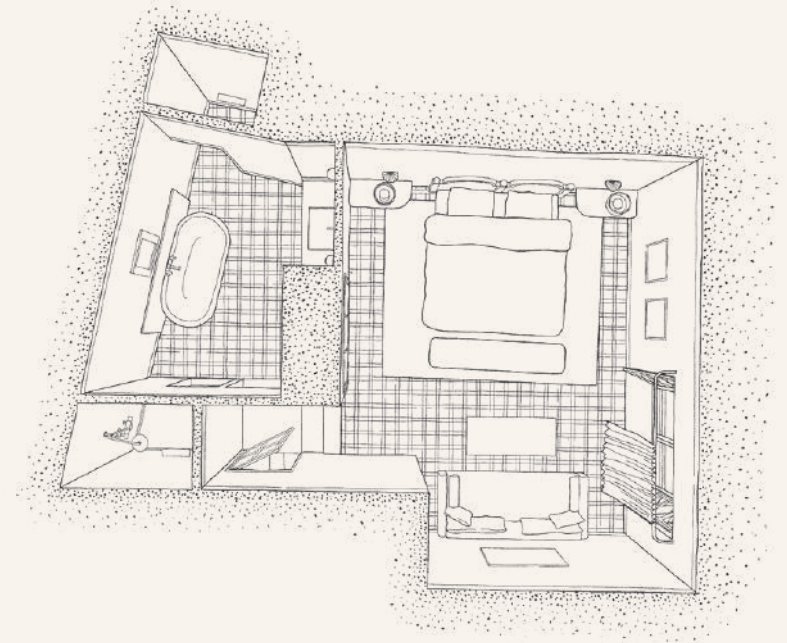






Junior Suite

SPACE 37 – 40 M² | CAPACITY FOR 2 PEOPLE



Its views of Portella Street or the interior patio of the house, along with its spacious rooms, have respected the original spaces of the house. They are provided with sofas, large beds and perfectly integrated bathrooms. Most of them can be connected to other rooms.



ROOM FEATURES

LOUNGE AIR
CONDITIONING CEILING
FAN

COMPLIMENTARY WIFI
SMART TV

MINIBAR BATHROOM
AMENITIES

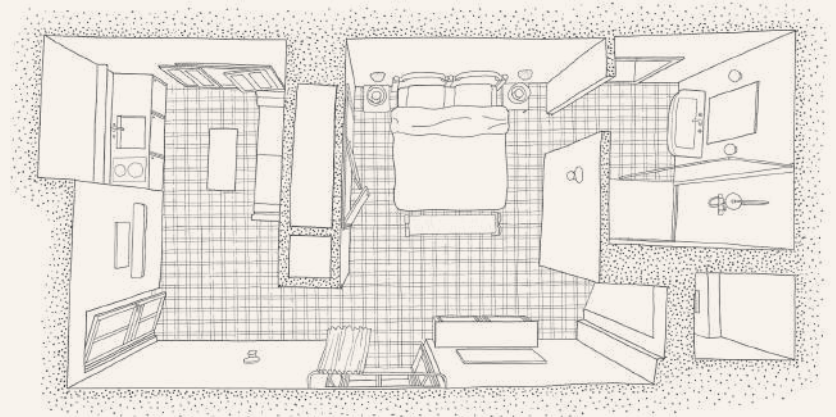






Suites

SPACE 38 – 60 M² | CAPACITY FOR 2 PEOPLE



These unique rooms have views of the historic center of the city and the interior patio of the house and have plenty of natural light. All are equipped with a kitchen separate from the bedroom, living room, large beds and integrated bathrooms. They offer the possibility of connecting with others.



ROOM FEATURES

LOUNGE AIR
CONDITIONING SMART
TV

COMPLIMENTARY WIFI
MINI BAR BATHROOM
AMENITIES

KITCHENETTE CEILING
FAN

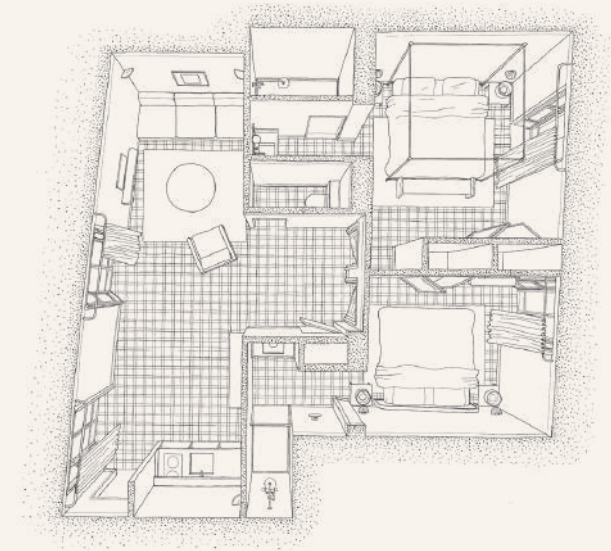






Arab Baths Apartment

SPACE 70 M² | CAPACITY FOR 4 PEOPLE



Portella's most exclusive accommodation. The former bedroom of the painter Joaquín Torrents Lladó. An exceptional two-bedroom apartment with commanding views of the historic Arab Baths and a large private terrace.

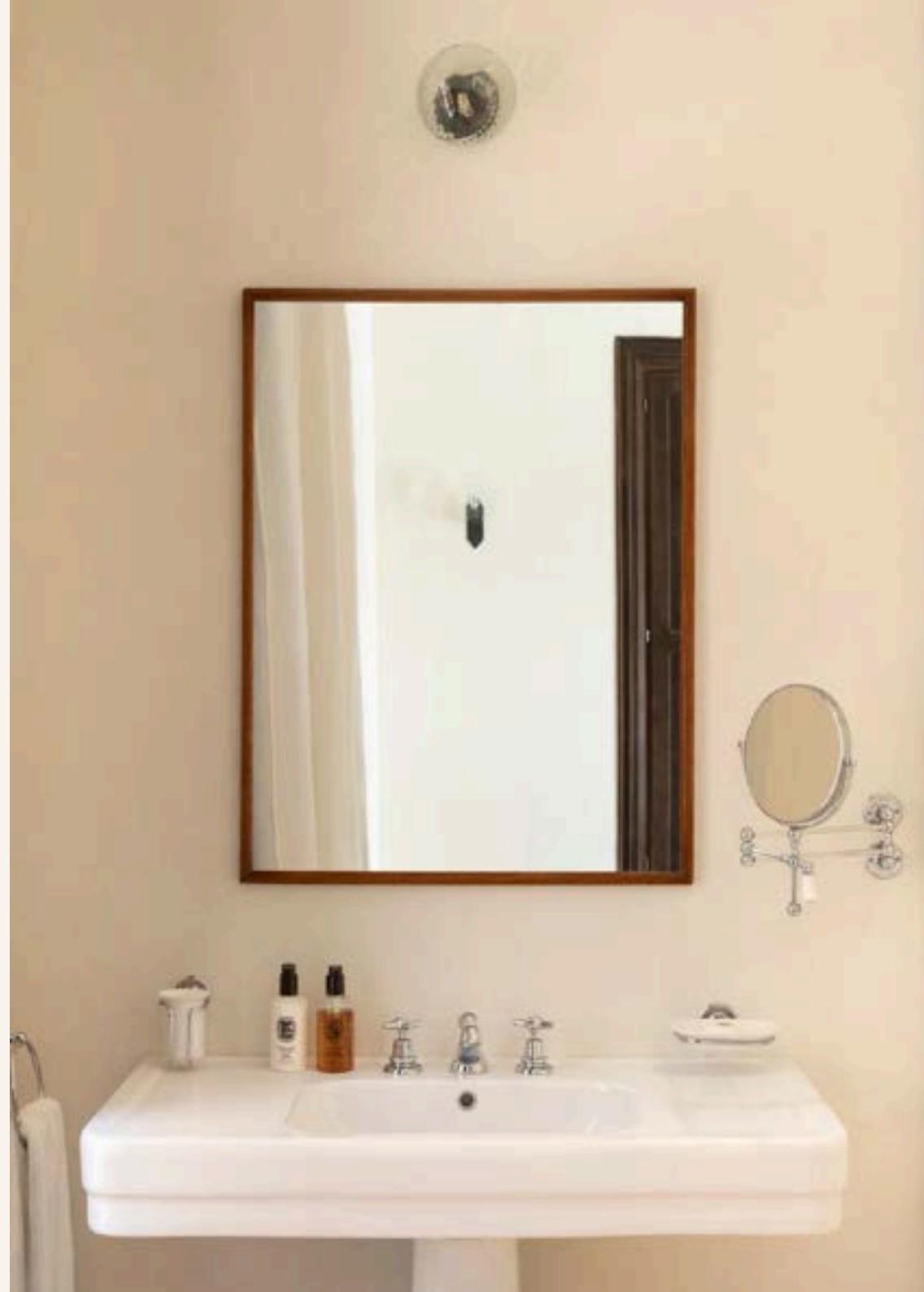


ROOM FEATURES

LOUNGE
A/C CONDITIONING
COMPLIMENTARY WIFI

MINI BAR
TWO BEDROOMS
KITCHENETTE

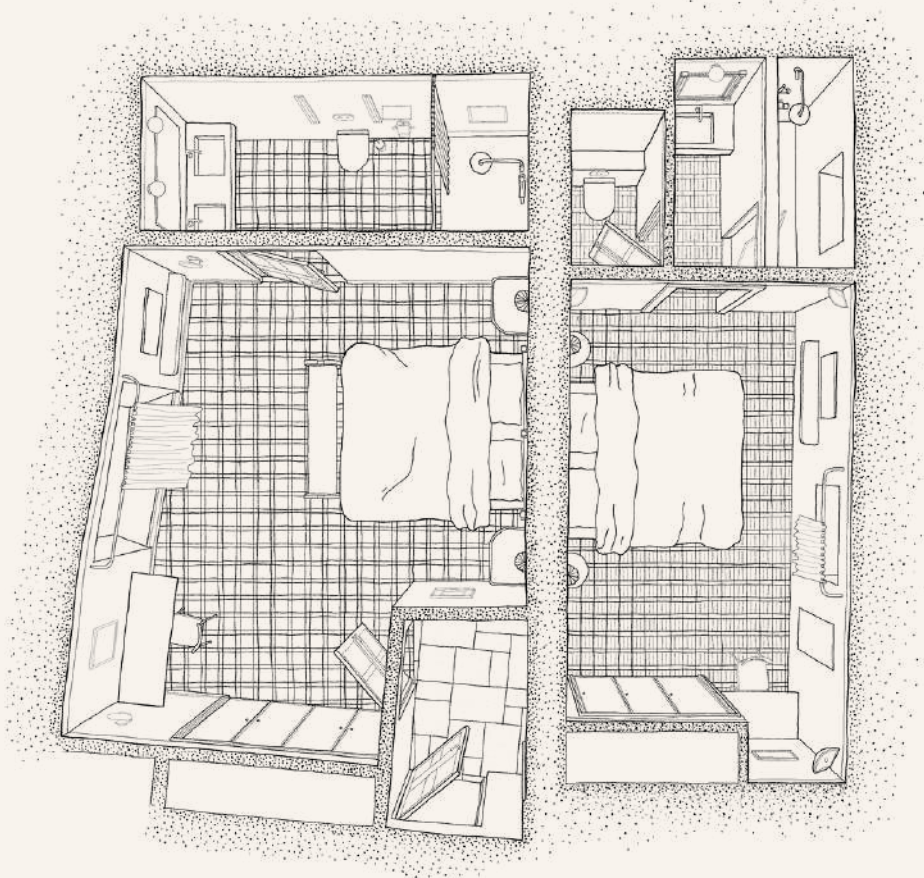
CEILING FAN
SMART TV
BATHROOM AMENITIES





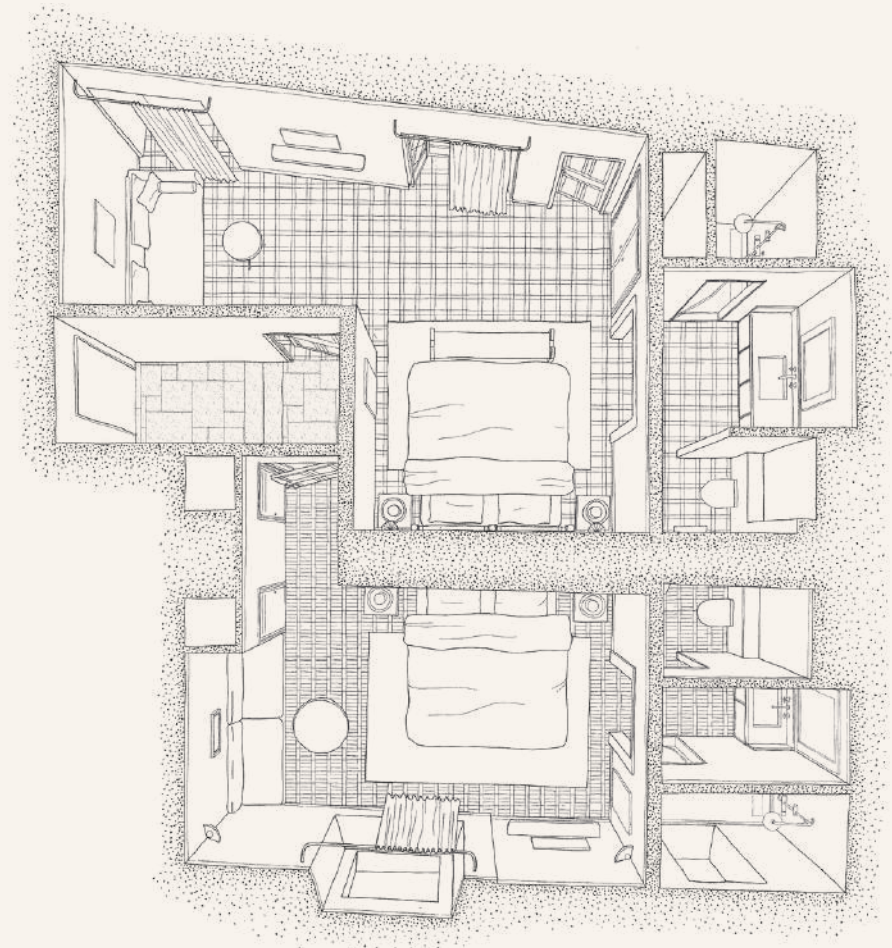


CONNECTING ROOMS



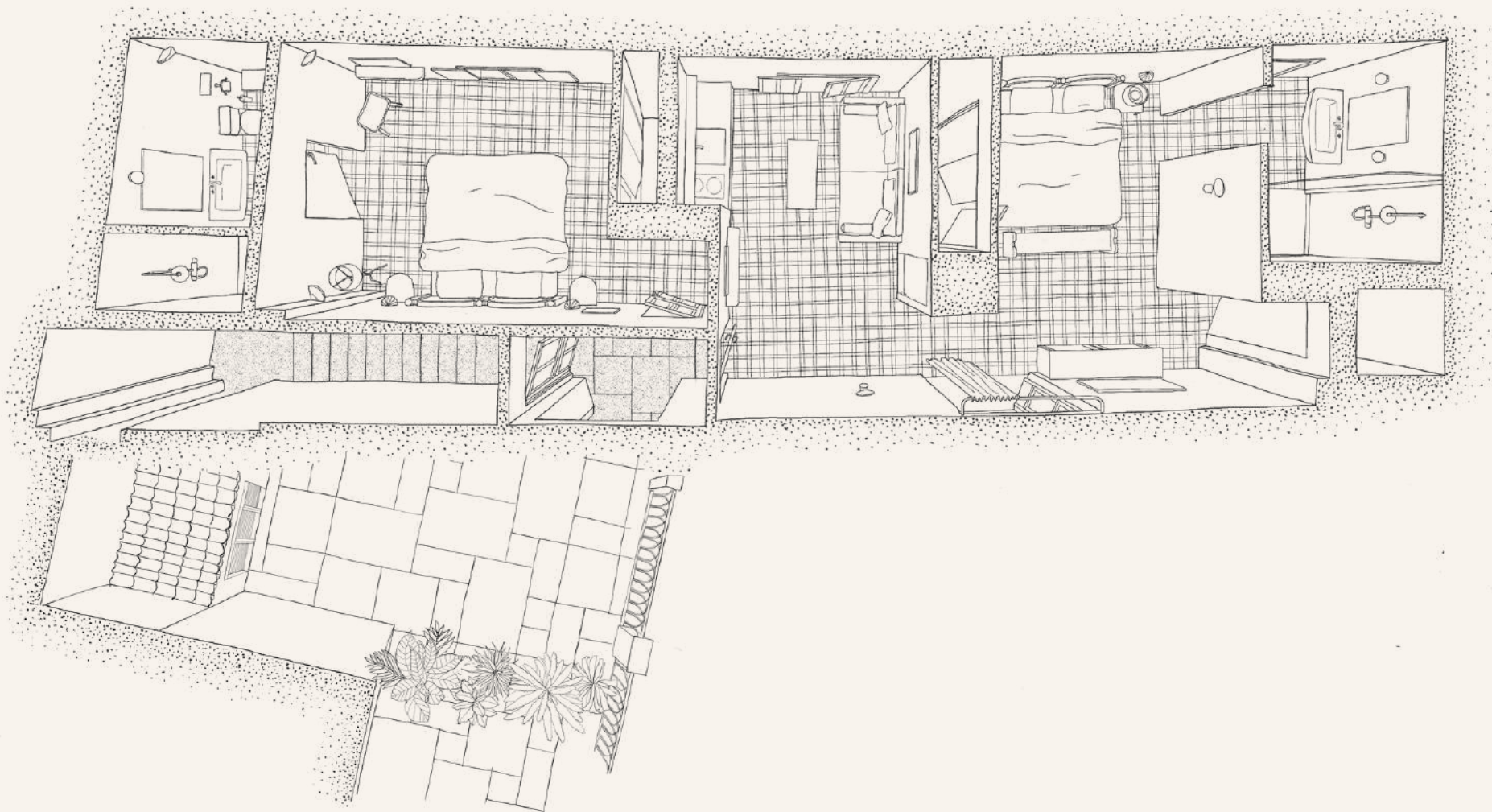
Can Serra

SPACE 46 M²
CAPACITY FOR 4 PEOPLE



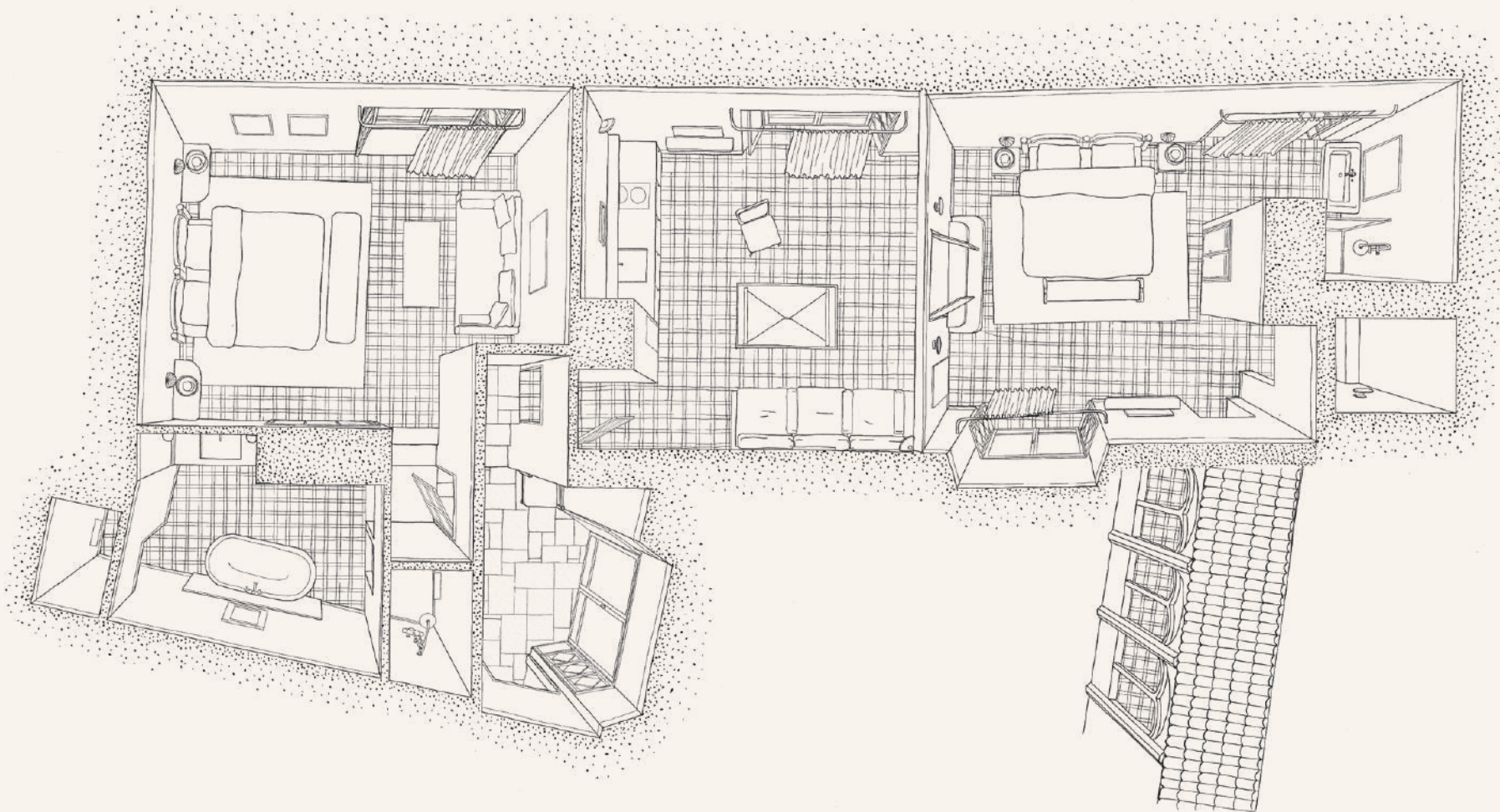
Can Serra Patio

SPACE 52 M²
CAPACITY FOR 4-5 PEOPLE

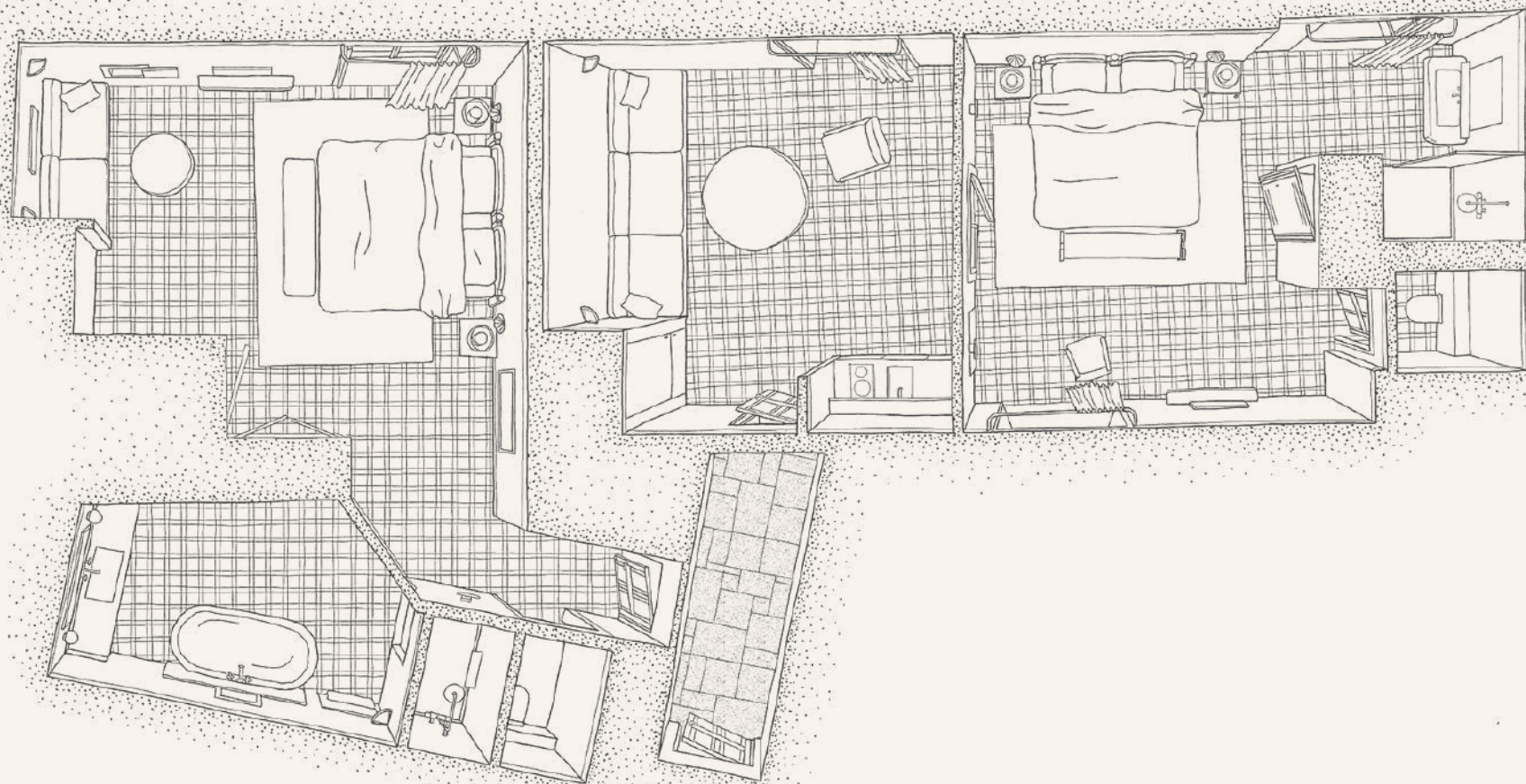


Santa Clara

SPACE 58 M²
CAPACITY FOR 4-5 PEOPLE

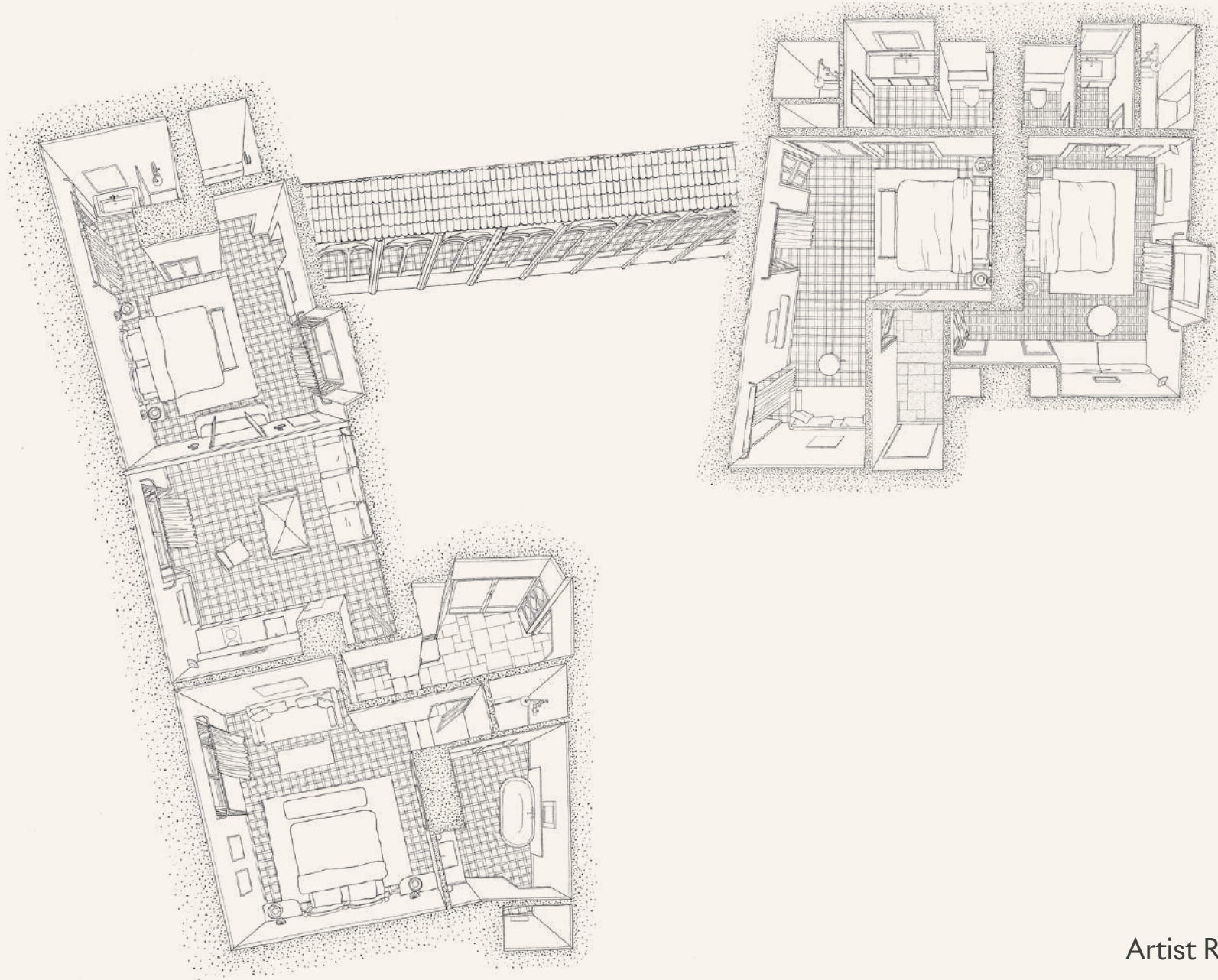


Mirador Portella
SPACE 75 M²
CAPACITY FOR 4-5 GUESTS



Portella Patio

SPACE 79 M²
CAPACITY FOR 4 PEOPLE



Artist Residence

SPACE 126 M²
CAPACITY FOR 10 GUESTS



SPACES

Rooftop The Salon Courtyard



There are intimate corners for reflection and cozy spaces for gathering. From its warm living room to the outdoor patio, where time seems to stand still, every area invites relaxation. Its private terrace offers unique views of the neighborhood, the Arab Baths, the Cathedral, and the rooftops of the old town, steeped in history and charm.







OFFERINGS

Food & Beverage

Portella's kitchen is open all day, offering seasonal dishes made with the finest local ingredients. While we have one restaurant, you can enjoy your meal in various settings—the dining room, lounge, courtyard, rooftop, or the privacy of your room. Everything is tailored to your preferences, and if you have a special request, our chef will personally prepare it for you.



Breakfast



We want you to feel at home, so breakfast is served until noon at your own pace. Enjoy freshly baked ensaimadas, Mahón cheese, artisan muesli, and Ca'n Company sobrasada, with hot dishes made to order. Pair it with our specialty coffee, roasted in Mallorca by Mistral.







Wellness



Inspired by traditional Turkish steam baths, our hammam is entirely built in stone, located in the original home to the pottery oven. It reaches a temperature of 50°C with 100% humidity and features an integrated shower for temperature contrasts.

The gym is equipped with the latest Technogym equipment for both cardio and strength training. Additionally, it offers a spacious area for strength exercises, mobility, stretching, yoga, or pilates.

We offer a complete à la carte treatment and massage service, including sports massages, decontracting massages, reflexology, and techniques inspired by Arabic and Ayurvedic traditions.

Sustainable Project Philosophy & Living



In Portella, our history and commitment to sustainability are intertwined, creating a space that goes beyond being just a hotel. We are an expression of respect for the past, a commitment to the present, and a promise to preserve the future.

Preservation and Replication: Conservation of the original elements of the house, referencing Mallorcan culture.

Carbon Footprint: Use of renewable energy, energy-saving systems, and water management.

Other Actions: Local and proximity consumption, waste segregation, and sustainable packaging.





The Best Places to Stay
in Spain, 2024

VOGUE



“There are places where, as soon as you enter, you feel a special aura that surrounds you and inspires you, and Portella is one of them...”

Condé Nast
Traveller



“Mallorca's New Portella Hotel Is
A Dream Of Understated Luxury”

Forbes



Address:
Carrer de la Portella, 9
CP - 07001 Palma de Mallorca
Islas Baleares, España

Phone number:
+34 871 62 62 63
Email:
welcome@portellapalma.com

EWeb:
portellapalma.com
IG:
@portellapalma

DS Codes: Amadeus: YX PMIPOR
S a b r e : YX 6 0 6 4 4 8
Galileo Apollo: YX 11538
Worldspan: YX PMIPO
dhisco: gl 44098

PORTELLA