

PALMA DE MALLORCA

PORTELLA

A HOUSE NEXT TO THE ARAB BATHS



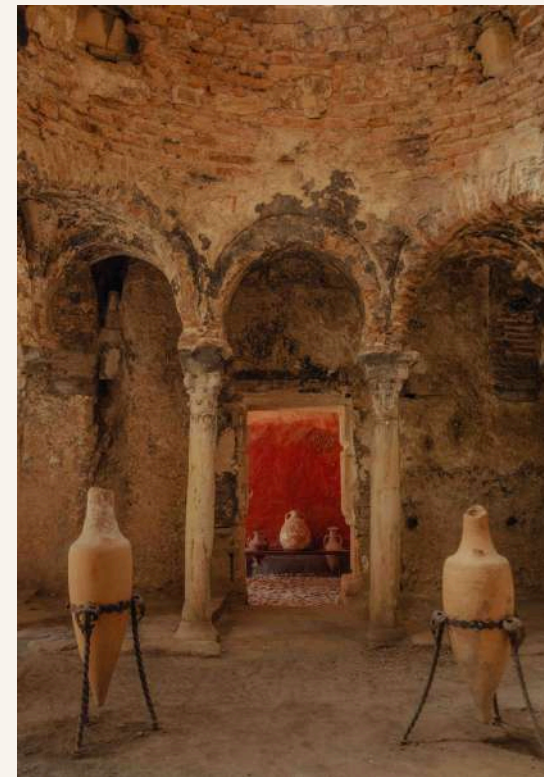
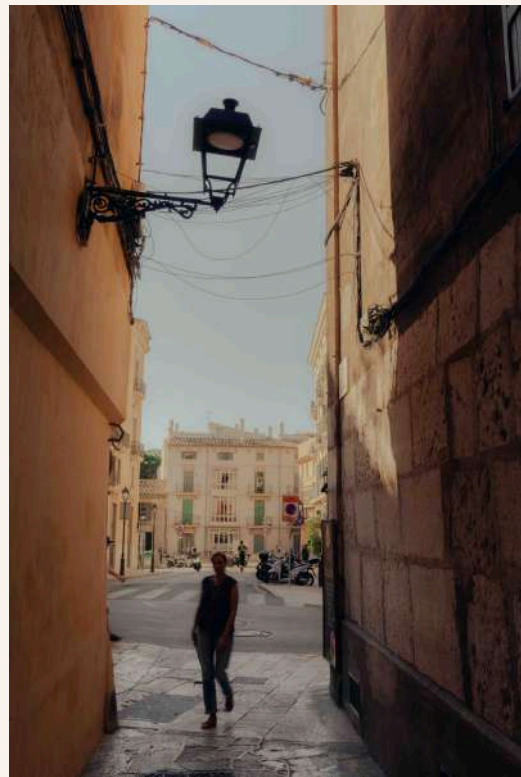
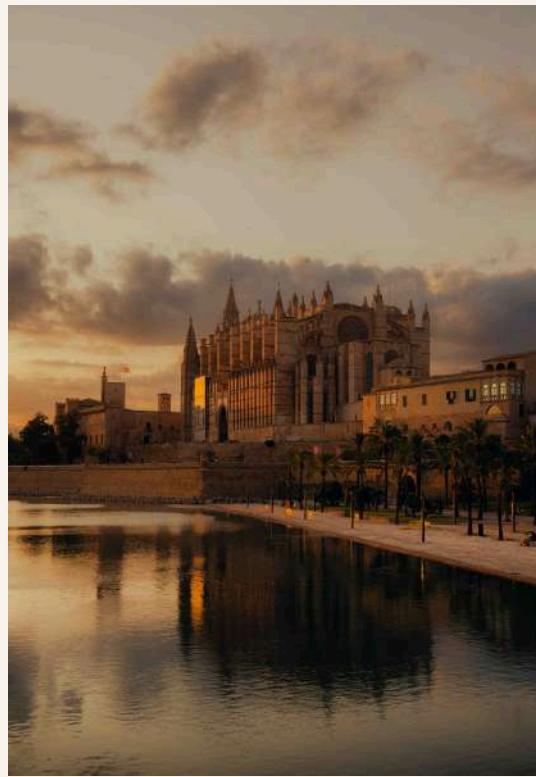


Portella is a typical Palma house with Moorish and Venetian Renaissance influences, located in the historic center next to the Arab Baths. Built in the 17th century, it has been home to aristocrats, merchants, and artists, including painter Joaquín Torrents Lladó.

We work with the best craftsmen on the island to highlight the historical essence of the house, combining it with maximum comfort and discreet luxury, designed for those who appreciate authenticity.

Each piece of furniture, material, and fabric has been carefully hand-selected. Notably, we collaborating with the Gordiola family; legendary glass craftsmen since 1719 and the oldest company in the Balearic Islands. With their help, we designed all the lighting in the house, creating unique pieces, hand-blown specifically for Portella.

Portella offers a peaceful escape in the midst of the city; home to 13 Apartments + Suites, an open café-kitchen, Rooftop, gym, hammam and treatment room. Available to individual stays or entire buyouts.



LOCATION

CARRER DE LA PORTELLA, 9
CP - 07001 PALMA DE MALLORCA
ISLAS BALEARES, ESPAÑA

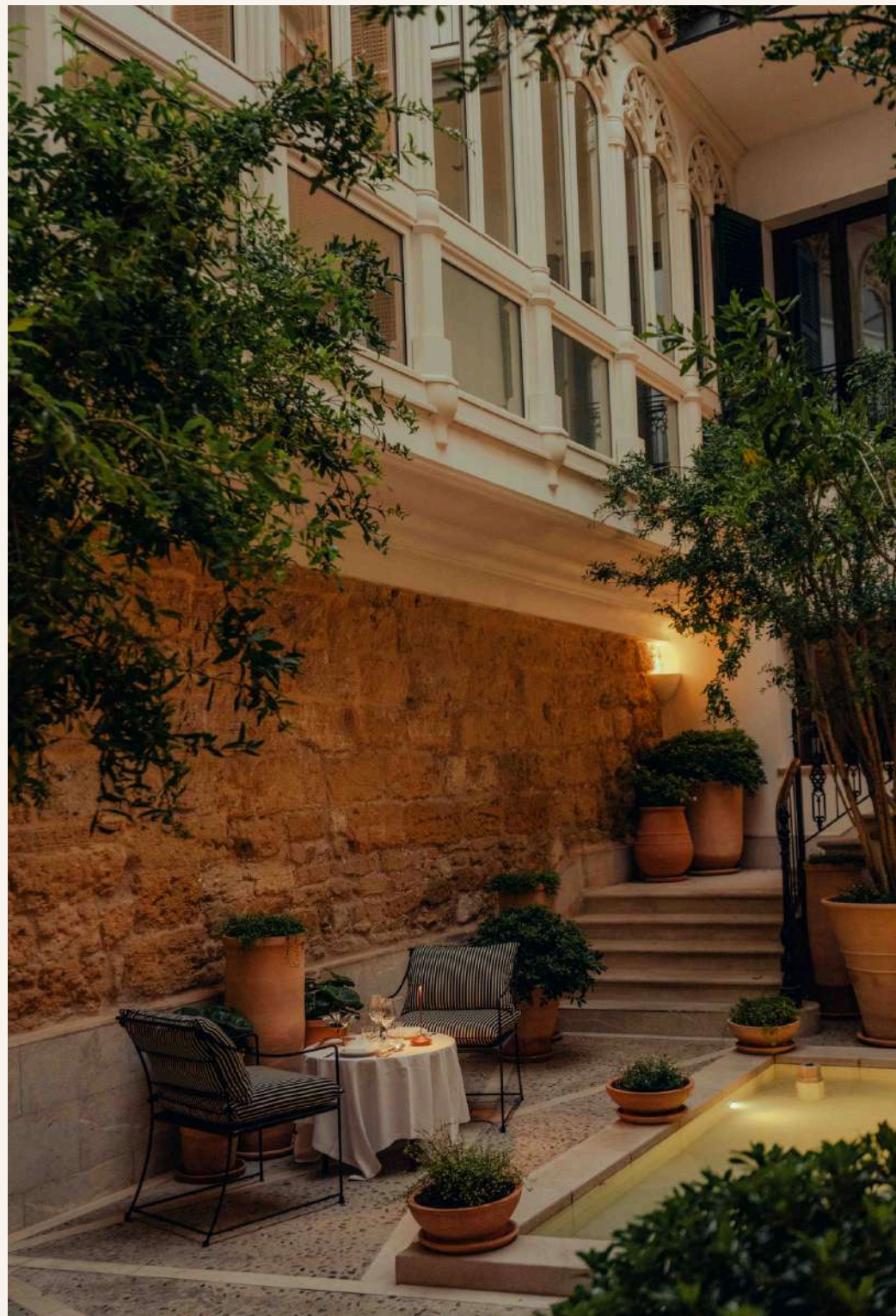
Located 15 minutes from the airport and at one of the former entrances to Palma's walled city, on Calle de la Portella—one of the city's most iconic streets, lined with historic mansions. Just steps from the Cathedral, the city walls, and the main shopping areas, and only a five-minute walk from the sea, it still retains the charm and tranquility of a historic neighborhood. Portella is a perfect escape or base for exploring other parts of the island.

[illegible]



THE COURTYARD

The house is centred around a charming central courtyard—an inviting place to relax or enjoy a drink, surrounded by lush greenery and accompanied by the gentle murmur of the fountain. Intimate corners invite quiet reflection, while cosy spaces encourage gathering and conversation.



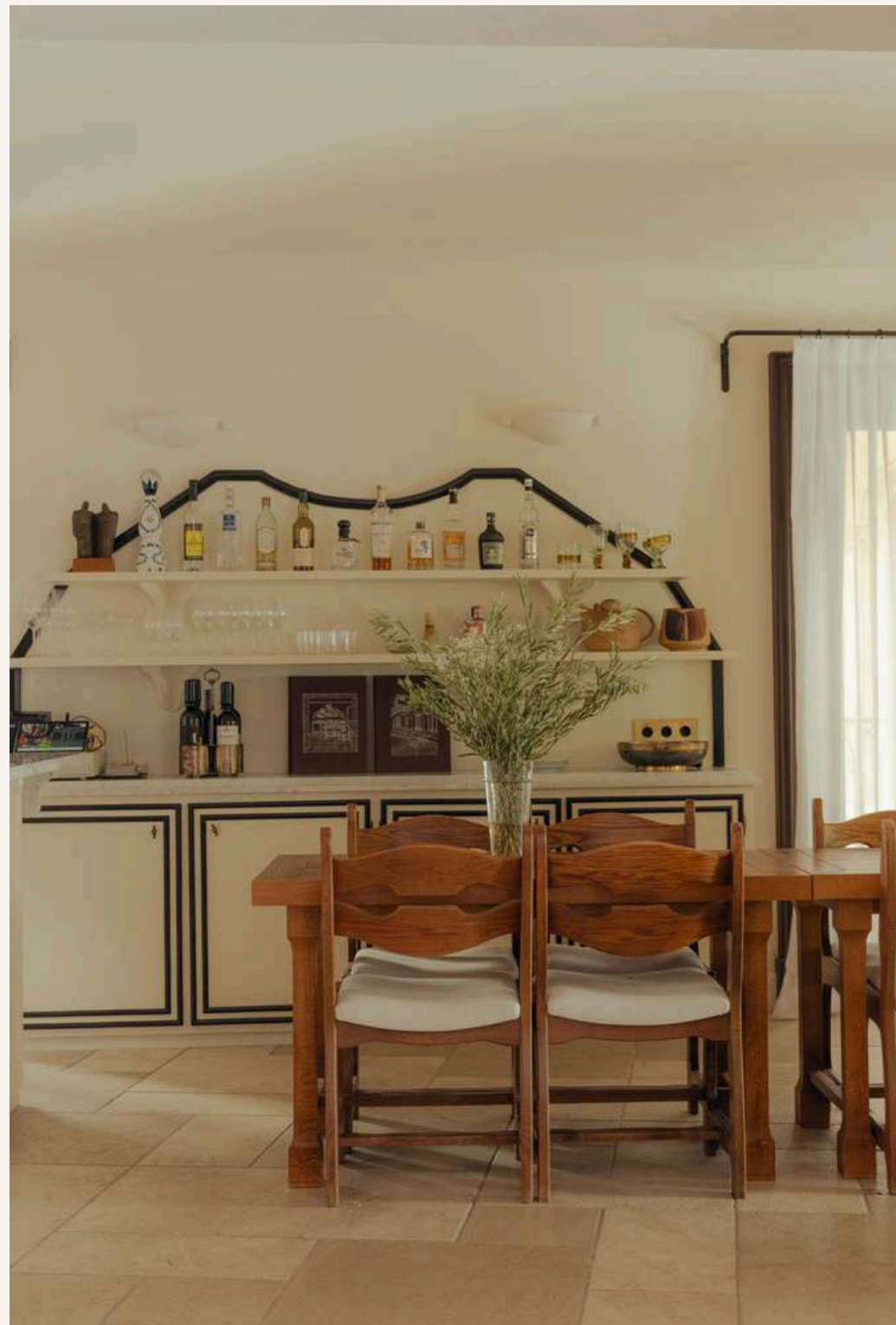


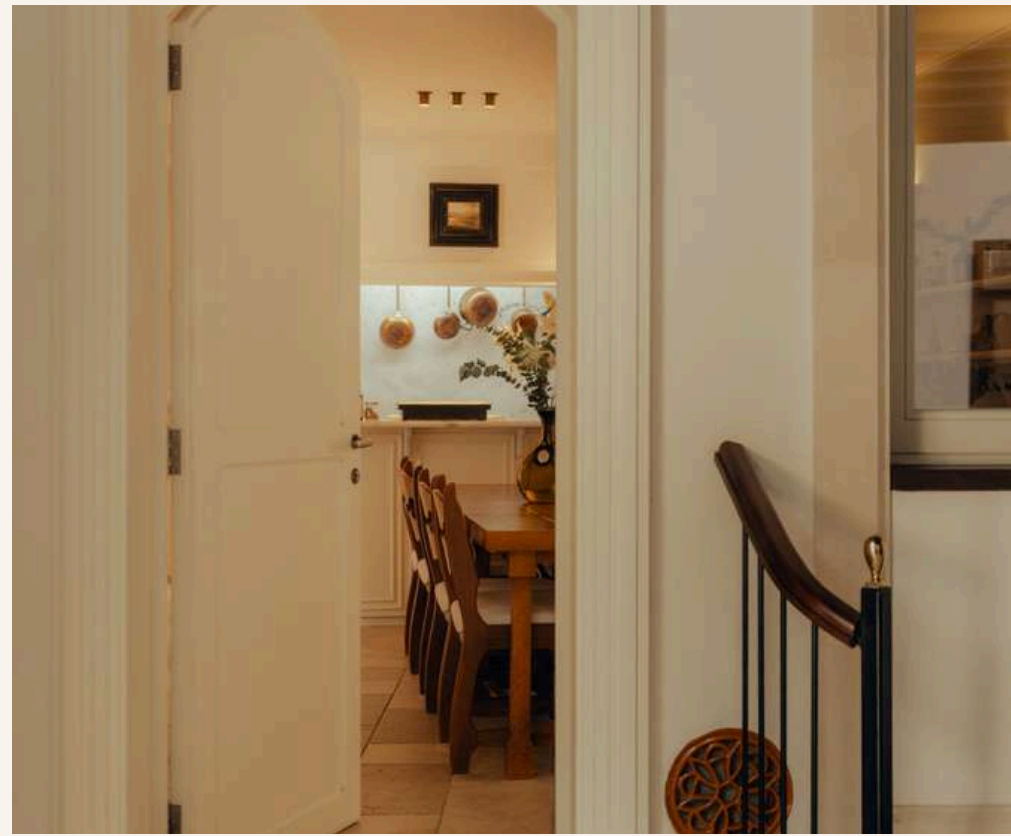
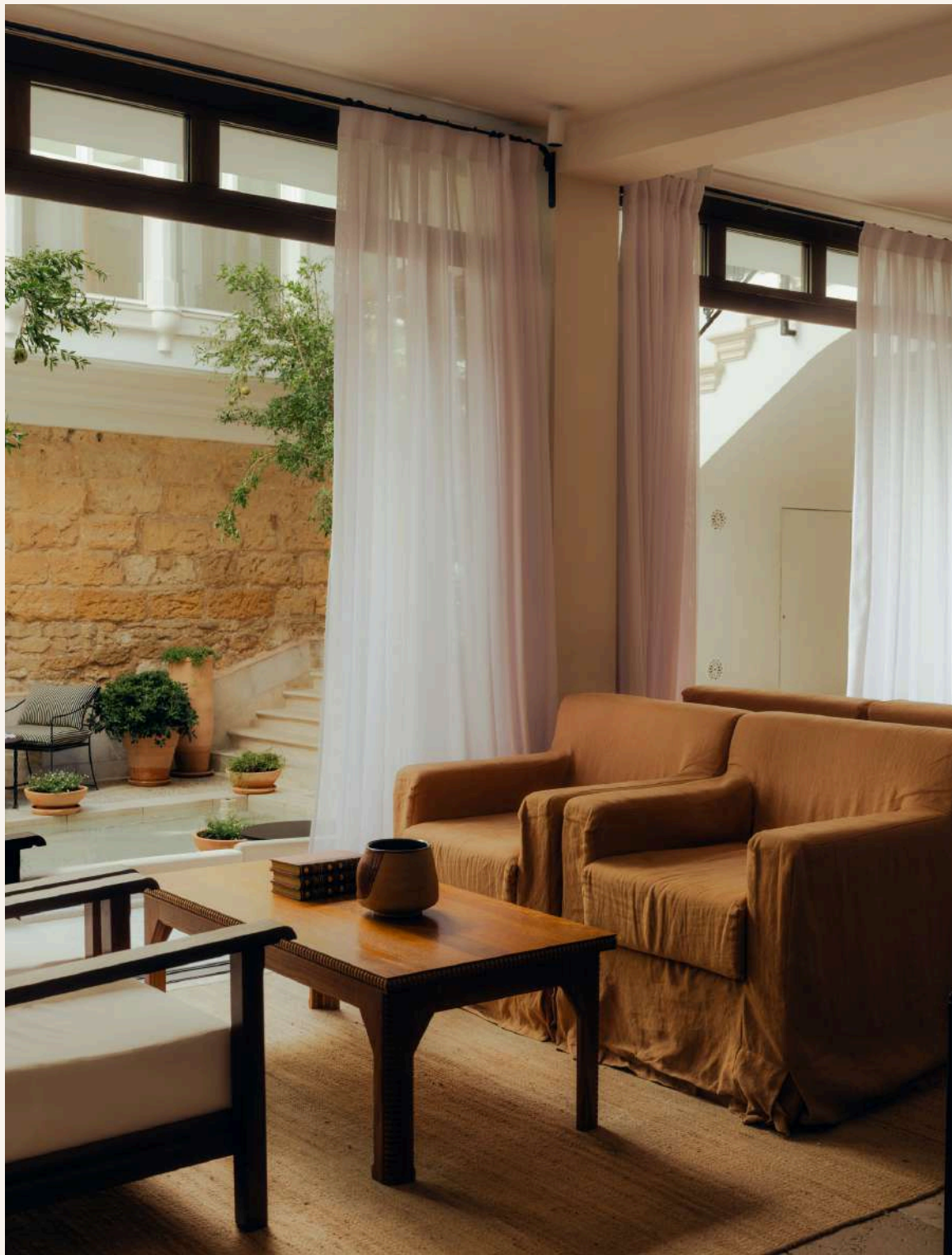


CAFÉ PORTELLA

Portella's kitchen is open from breakfast until 17:00, serving seasonal Mediterranean dishes made with the finest local ingredients. Our Café is a relaxed space for breakfast, brunch, and lunch, complemented by a thoughtfully curated wine list.

For quieter moments, our well-stocked minibar and in-room kitchenettes make it easy to dine at your own pace, whether in your room or with an aperitif on the rooftop. Palma becomes your dining room, and we're always happy to share our favourite places to eat and drink across the city. Private chef services can also be arranged upon request







THE ROOFTOP

The private rooftop offers unique views over the neighborhood, the Arab Baths, the Cathedral, and the rooftops of the Old Town. Settle into one of our sun loungers, cool off under the fresh-water shower, or enjoy a cold drink, taking a moment of quiet from the city below.





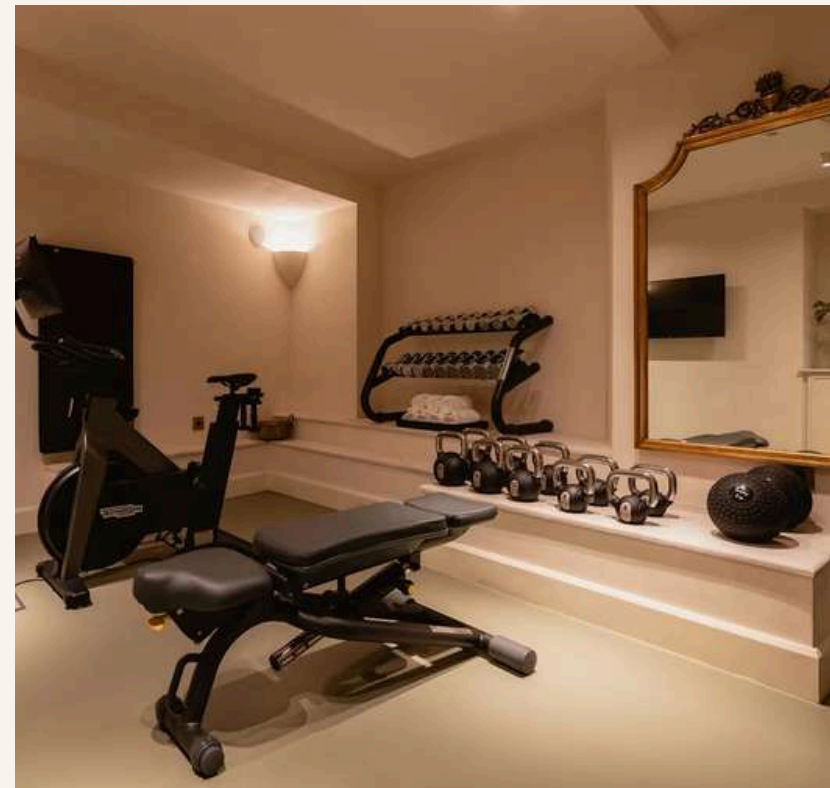
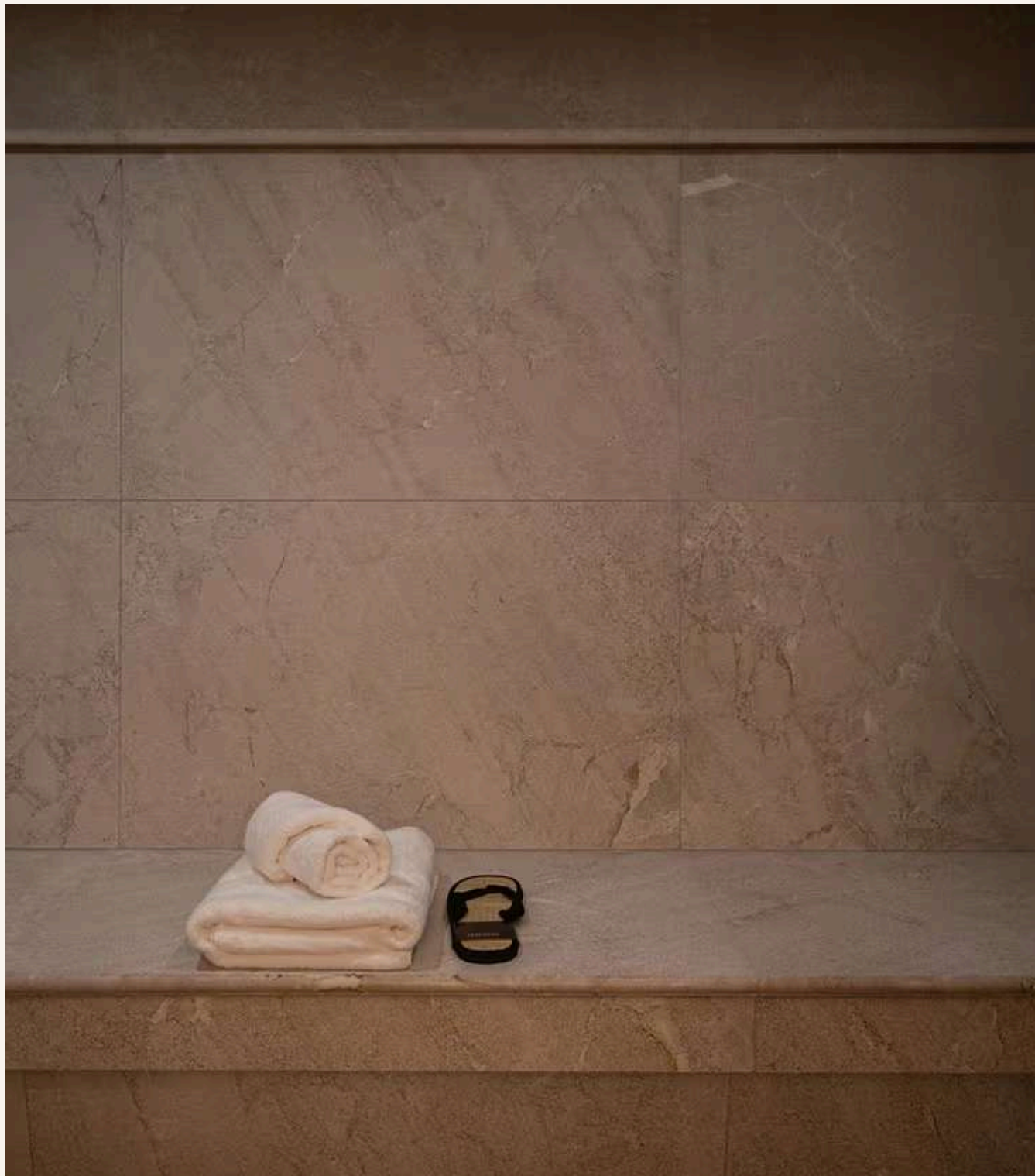
WELLNESS

Inspired by traditional Turkish steam baths, our hammam is entirely built in stone, located in the original home to the pottery oven. It reaches a temperature of 50°C with 100% humidity and features an integrated shower for temperature contrasts.

The gym is equipped with the latest Technogym equipment for both cardio and strength training. Additionally, it offers a spacious area for strength exercises, mobility, stretching, yoga, or pilates.

We offer a complete à la carte treatment and massage service, including sports massages, decontracting massages, reflexology, and techniques inspired by Arabic and Ayurvedic traditions.





ROOMS & SUITES





1 COZY



1 DOUBLE



4 JUNIOR SUITE



5 SUITE

With 13 suites and apartments, the house offers a wide range of options to suit your stay. Whether travelling solo in one of our more intimate rooms, or looking for extra space as a couple or family, there is a layout to match your needs. Many of our rooms feature in-room kitchenettes, roll-top bathtubs, and private terraces, with daily housekeeping included.

Our offering is shaped not by length of stay, but by experience and design.



COZY

SPACE 19 – 21 M² | CAPACITY FOR 2 PEOPLE

Our Cozy room is compact and thoughtfully designed, yet well equipped with premium amenities—ideal for shorter stays or solo travellers. It can be connected to an adjacent space to create a two-bedroom apartment. Some offer quick access to the interior courtyard, while others feature characterful sloping ceilings.

ROOM FEATURES

AIR CONDITIONING

STOCKED MINIBAR

BATHROOM AMENITIES

IRON STEAMERS

COMPLIMENTARY WIFI

SMART TV

NESPRESSO & TEA POT





DOUBLE

SPACE 19 – 27 M² | CAPACITY FOR 2 PEOPLE

Ideal for couple getaways, these spaces are located on the upper ground floor, with views over the charming Can Serra Street or the house's serene interior patio. They can be connected to create generous two-bedroom apartments for families.

ROOM FEATURES

AIR CONDITIONING
COMPLIMENTARY WIFI

STOCKED MINIBAR
SMART TV

BATHROOM AMENITIES
NESPRESSO & TEA POT

IRON STEAMER





JUNIOR SUITE

SPACE 37 – 40 M² | CAPACITY FOR 2 PEOPLE

Overlooking Portella Street or the house's interior courtyard, these generous spaces honour the original proportions of the building. Thoughtfully arranged with sofas, large beds, and seamlessly integrated bathrooms, they offer both comfort and calm. Most can be connected to adjoining spaces, making them ideal for families or longer stays.

ROOM FEATURES

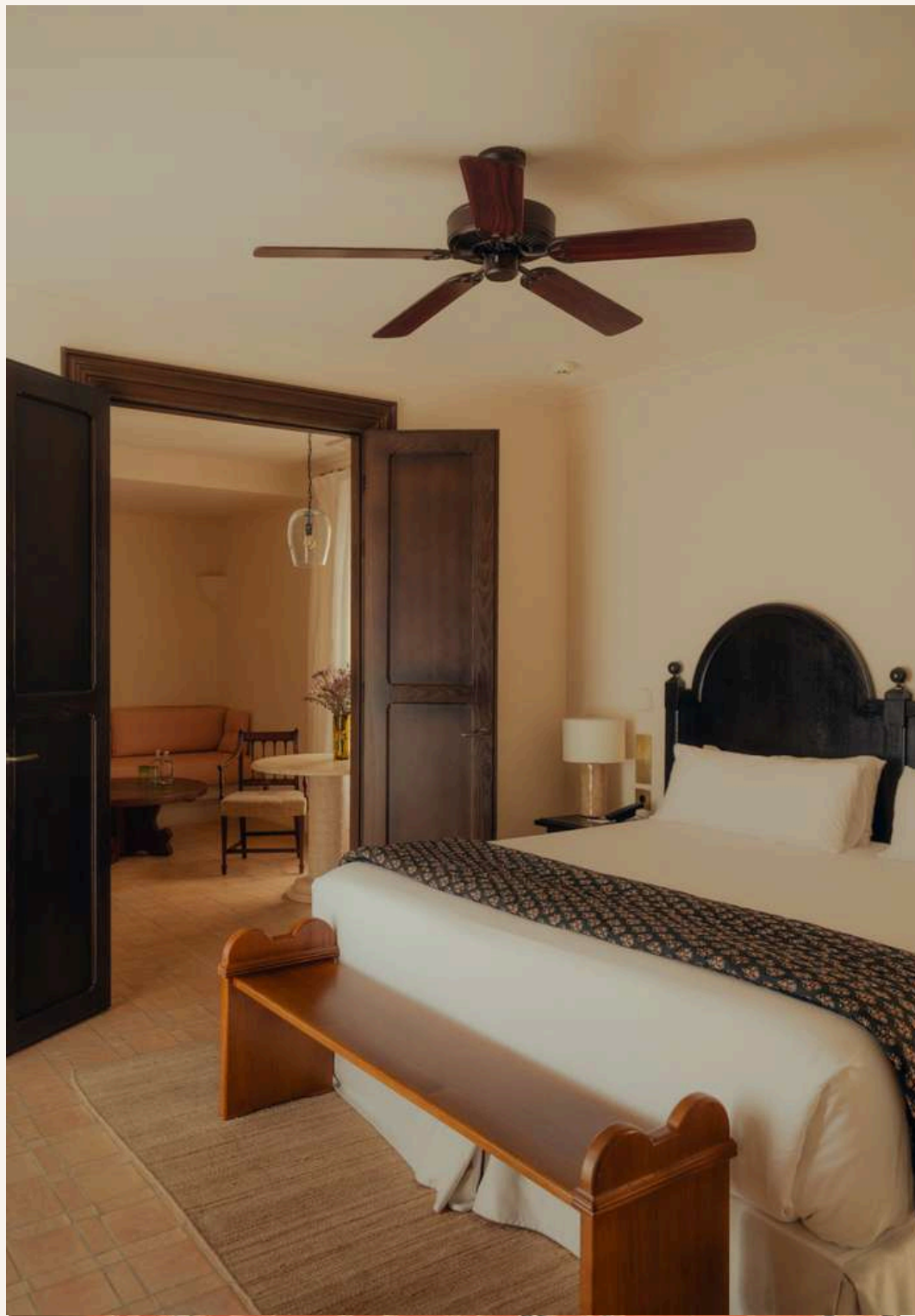
AIR CONDITIONING
COMPLIMENTARY WIFI

STOCKED MINIBAR
SMART TV

BATHROOM AMENITIES
BATH TUBS (SOME)

STEAMERS
IN-ROOM TEA & COFFEE





SUITE

SPACE 38 – 60 M² | CAPACITY FOR 2 PEOPLE

These distinctive spaces enjoy views over the historic centre and the house's interior courtyard, filled with natural light throughout the day. Each suite features a separate kitchen, living area, and bedroom, with large beds and beautifully integrated bathrooms. Several can be connected, offering added flexibility and privacy for families or extended stays.

ROOM FEATURES

AIR CONDITIONING
COMPLIMENTARY WIFI

STOCKED MINIBAR
SMART TV

BATHROOM AMENITIES
BATH TUBS (SOME)

STEAMERS
IN-ROOM TEA & COFFEE



APARTMENTS & FAMILY ROOMS

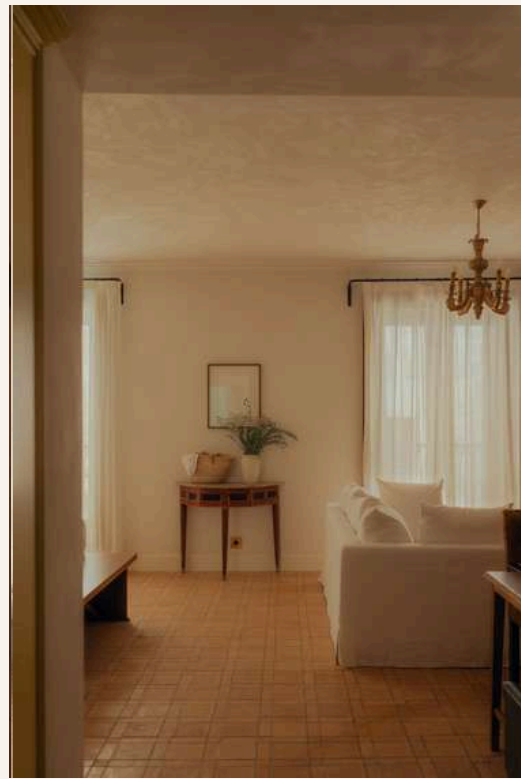




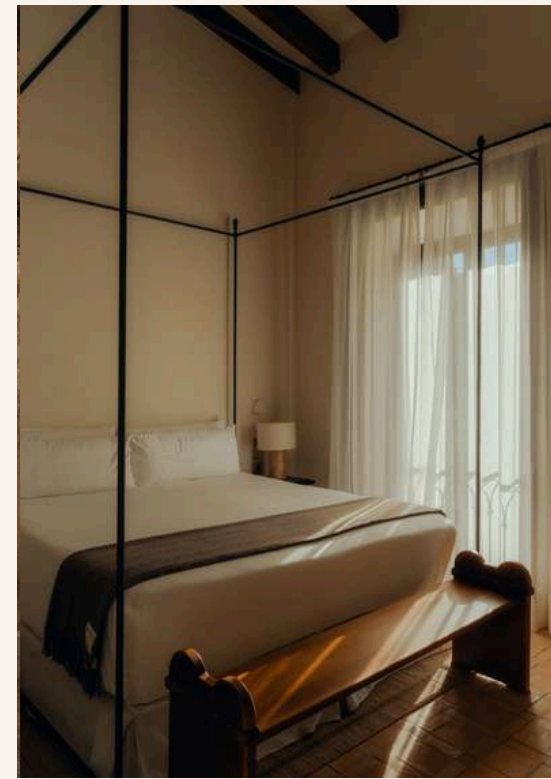
CAN SERRA



CAN SERRA PATIO



PORTELLA
APARTMENT



ARAB BATHS
APARTMENT

Our fully equipped apartments and family rooms, of up to 126 sqm, can be connected to create larger suites. Ideal for families or those seeking enhanced privacy, these spaces offer both independence and flexibility, with the utmost discretion. Although not documented here; suites can be interconnected to extend to 126sqm including our Artist Residence. Enquire directly.

CAN SERRA

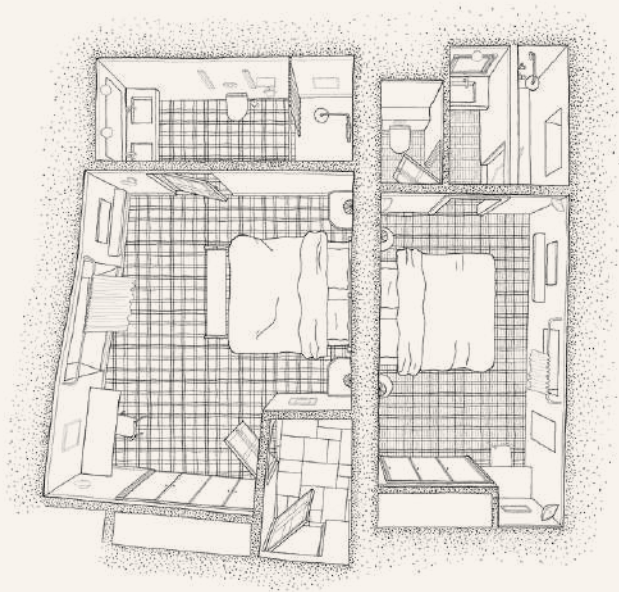
SPACE 46 M² - CAPACITY FOR 4 PEOPLE

Located on the ground floor, this 46 m² connected space overlooks the house's peaceful interior courtyard. Comprising two bedrooms and two bathrooms, it is well suited to short stays for families or small groups. Thoughtfully designed to balance comfort and functionality, it offers a relaxed and intimate setting with a sense of ease and privacy.

ROOM FEATURES

- | | | | |
|--------------------|-----------------|--------------------|-----------------------|
| AIR CONDITIONING | STOCKED MINIBAR | BATHROOM AMENITIES | SEPERATE LOUNGE |
| COMPLIMENTARY WIFI | SMART TV | KITCHENETTE | TWO BED, TWO BATHROOM |





CAN SERRA PATIO

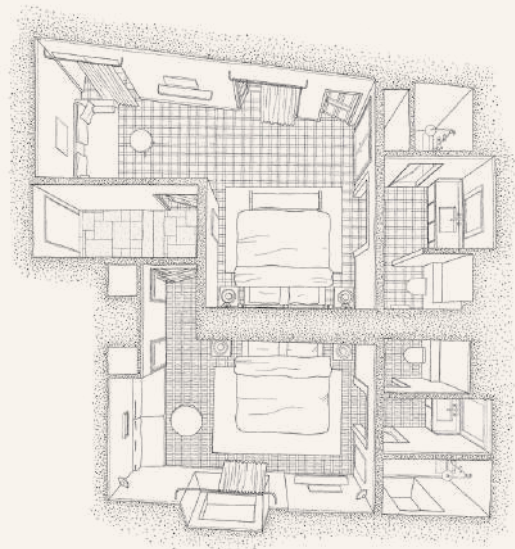
SPACE 52 M² - CAPACITY FOR 5 PEOPLE

Set at the heart of the house, the Can Serra Patio Suite enjoys views over both the serene interior courtyard and the historic city of Palma. With two bedrooms and two bathrooms, the space is filled with natural light and features a cosy reading gallery—an inviting corner for quiet moments at home.

ROOM FEATURES

- | | | | |
|--------------------|-----------------|--------------------|------------------------|
| AIR CONDITIONING | STOCKED MINIBAR | BATHROOM AMENITIES | LOUNGE |
| COMPLIMENTARY WIFI | SMART TV | KITCHENETTE | TWO BEDROOM & BATHROOM |





SANTA CLARA

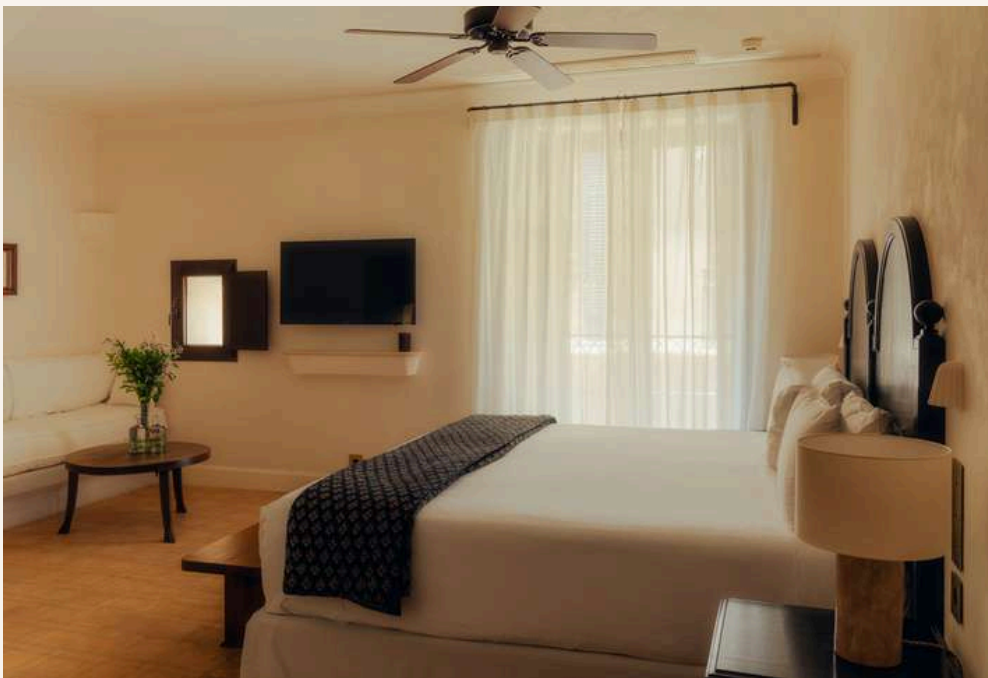
SPACE 58 M² - CAPACITY FOR 5 PEOPLE

Set at the highest point of the house and bathed in the morning sun, this 58 m² attic suite enjoys open views of the Santa Clara Convent. It features two double bedrooms, each with its own bathroom, a fully equipped kitchen, and a generous living area designed for relaxed moments together. With direct access to the building's terrace, the space invites you to fully take in the beauty of the surroundings.

ROOM FEATURES

| | | | |
|--------------------|-----------------|------------------------|----------|
| AIR CONDITIONING | STOCKED MINIBAR | BATHROOM AMENITIES | LOUNGE |
| COMPLIMENTARY WIFI | SMART TV | 2 BEDROOM & 2 BATHROOM | BATH TUB |





PORTELLA APARTMENT

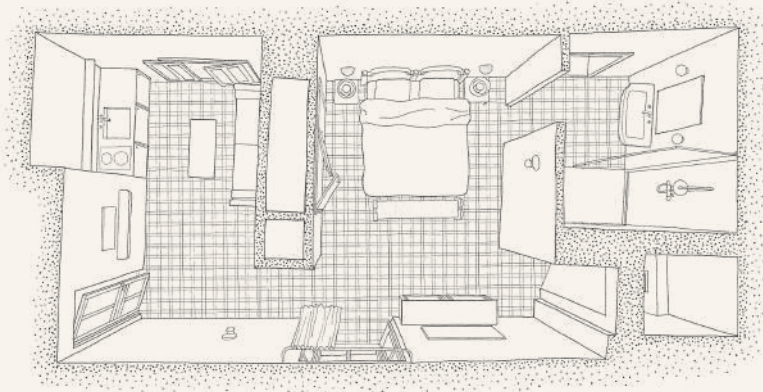
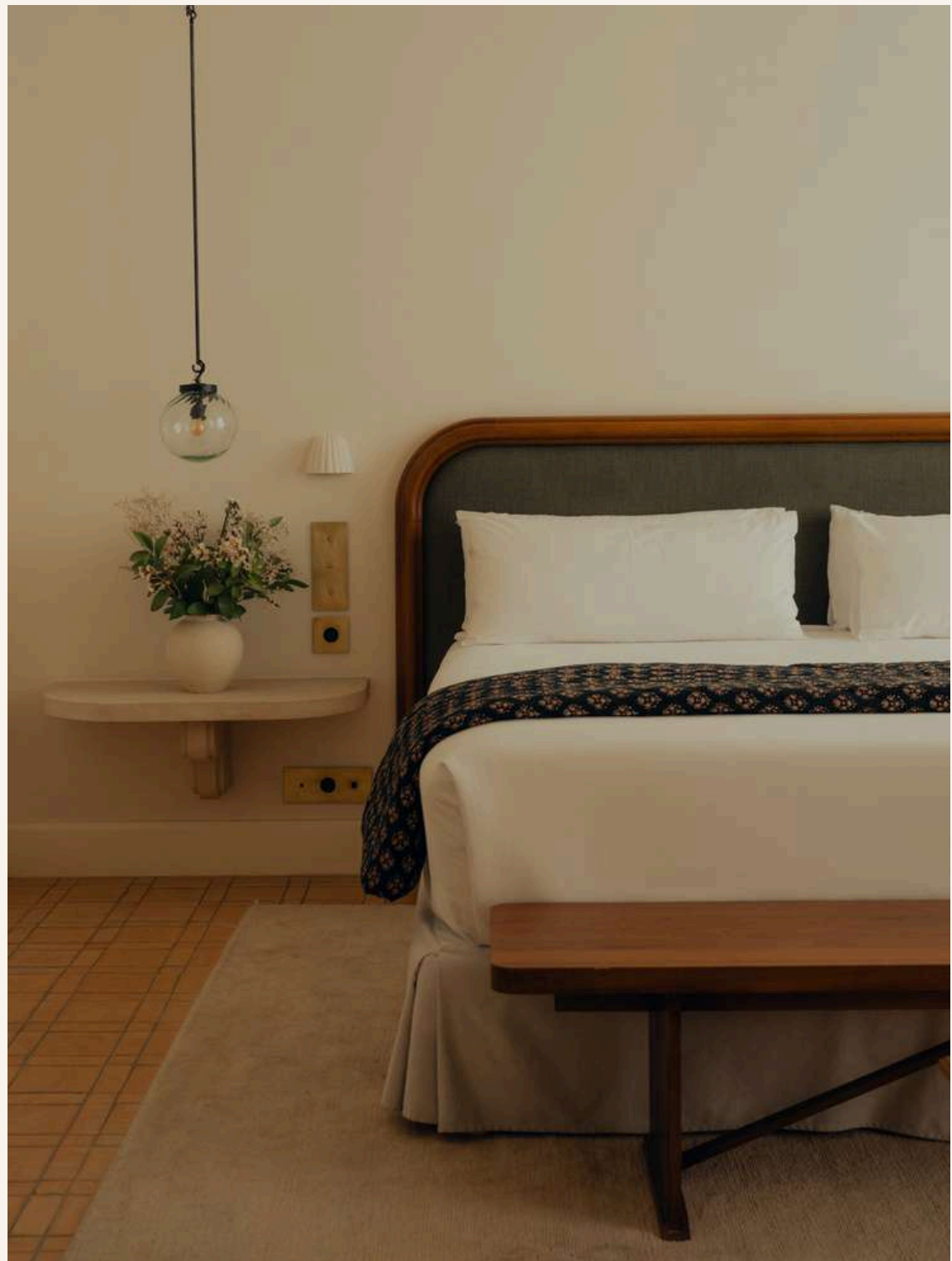
SPACE 58 M² | CAPACITY FOR 5 PEOPLE

Nestled at the highest point of the building and bathed in the morning sun, this 58 m² attic suite offers breathtaking views of the Santa Clara Convent. It features two double bedrooms, each with an independent bathroom, and a fully equipped kitchen. The spacious living room creates a welcoming atmosphere, and access to the building's terrace allows you to fully enjoy the surrounding beauty.

ROOM FEATURES

- | | | | |
|--------------------|-----------------|--------------------|--------------------------|
| AIR CONDITIONING | STOCKED MINIBAR | BATHROOM AMENITIES | LOUNGE |
| COMPLIMENTARY WIFI | SMART TV | KITCHENETTE | TWO BEDROOM & 2 BATHROOM |





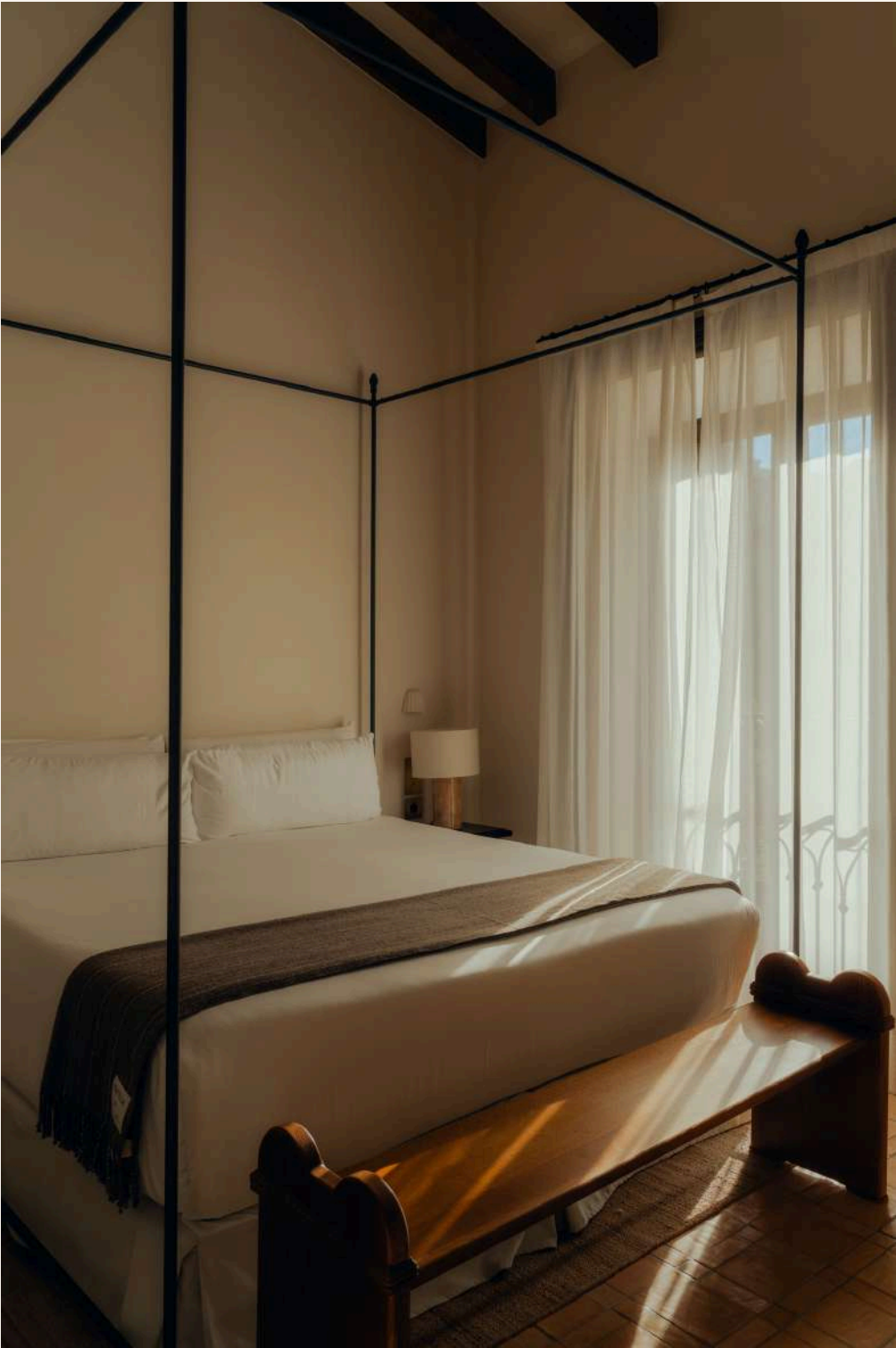
ARAB BATH APARTMENT

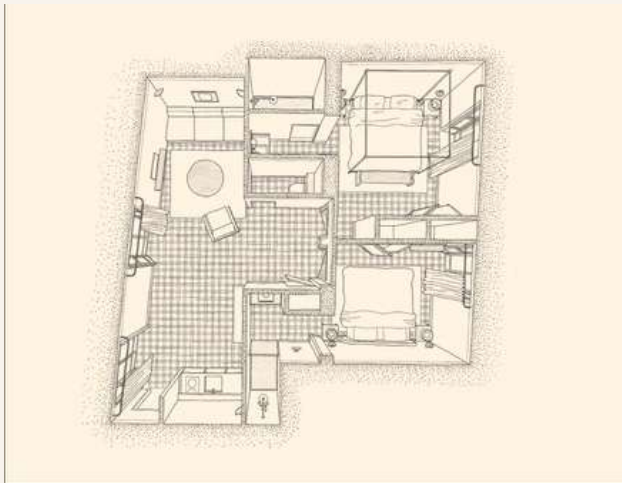
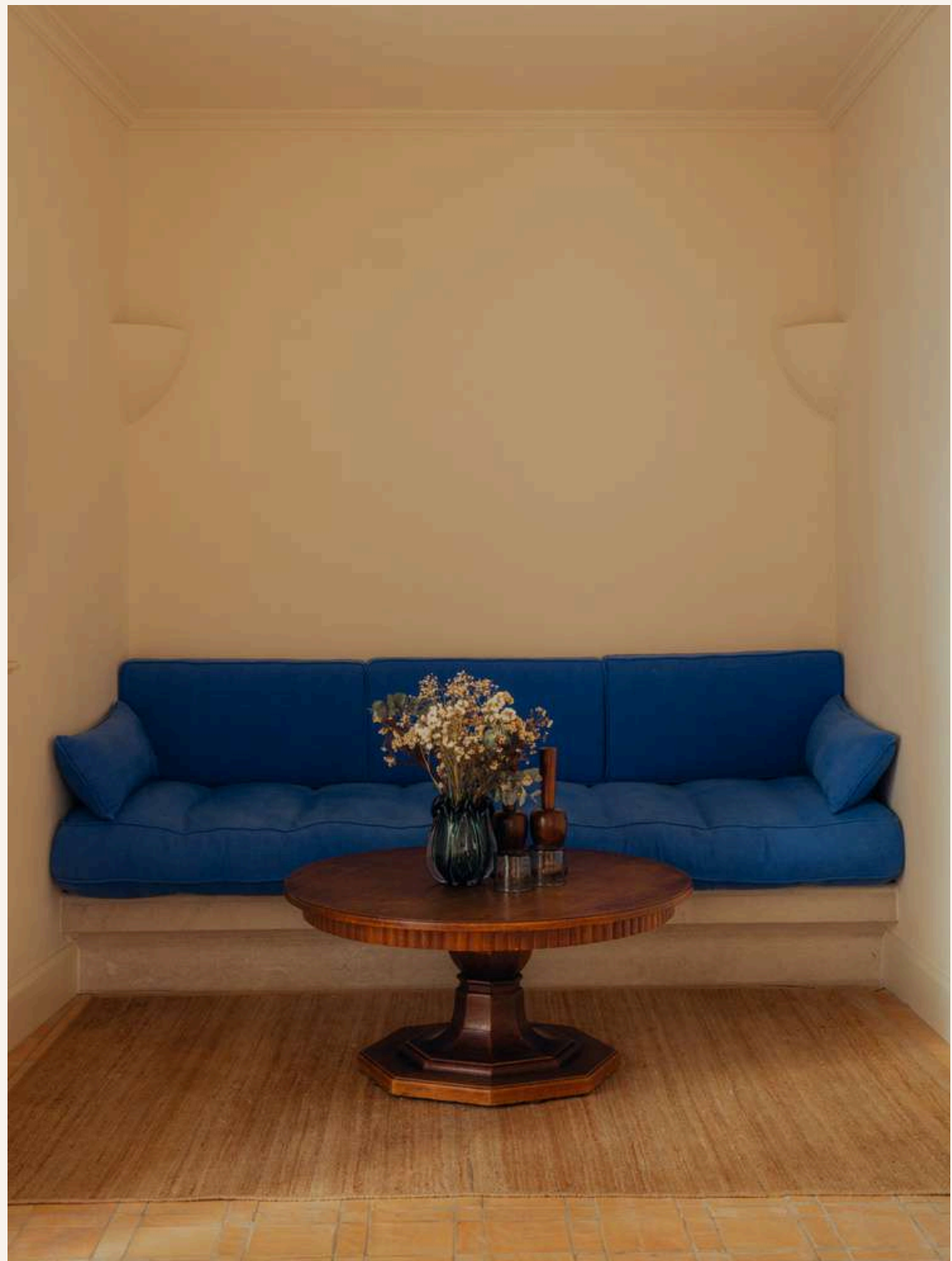
SPACE 70 M² | CAPACITY FOR 4 PEOPLE

Portella's most exclusive accommodation. The former bedroom of the painter Joaquín Torrents Lladó. An exceptional two-bedroom apartment with commanding views of the historic Arab Baths and a large private terrace.

ROOM FEATURES

- | | | | |
|--------------------|-----------------|--------------------|--------------------------|
| AIR CONDITIONING | STOCKED MINIBAR | BATHROOM AMENITIES | LOUNGE |
| COMPLIMENTARY WIFI | SMART TV | KITCHENETTE | TWO BATHROOM & 2 BEDROOM |





VOGUE

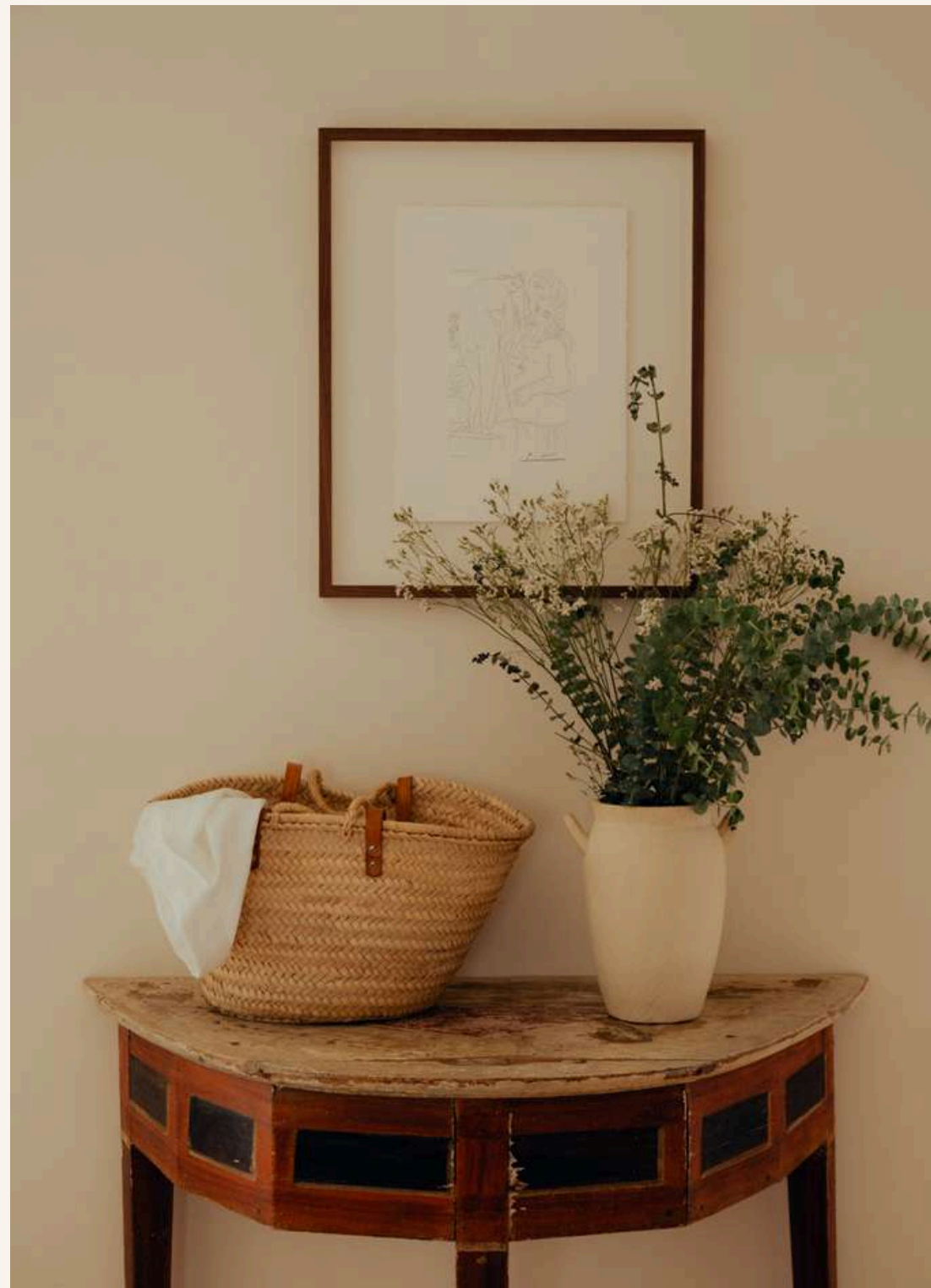
The Best Places to Stay
in Spain, 2024

Condé Nast
Traveller

“There are places where, as soon as you enter, you feel a special aura that surrounds you and inspires you, and Portella is one of them...”

Forbes

“Mallorca's New Portella Hotel Is A Dream Of Understated Luxury”





Address:
Carrer de la Portella, 9
CP - 07001 Palma de Mallorca
Islas Baleares, España

Phone number:
+34 871 62 62 63
Email:
welcome@portellapalma.com

Web:
portellapalma.com
IG:
@portellapalma

DS Codes: Amadeus: YX PMIPOR
S a b r e : YX 6 0 6 4 4 8
Galileo Apollo: YX 11538
Worldspan: YX PMIPO
dhisco: gl 44098