



MIDDLE EIGHT

COVENT GARDEN

WHERE MUSIC SHAPES THE MOOD



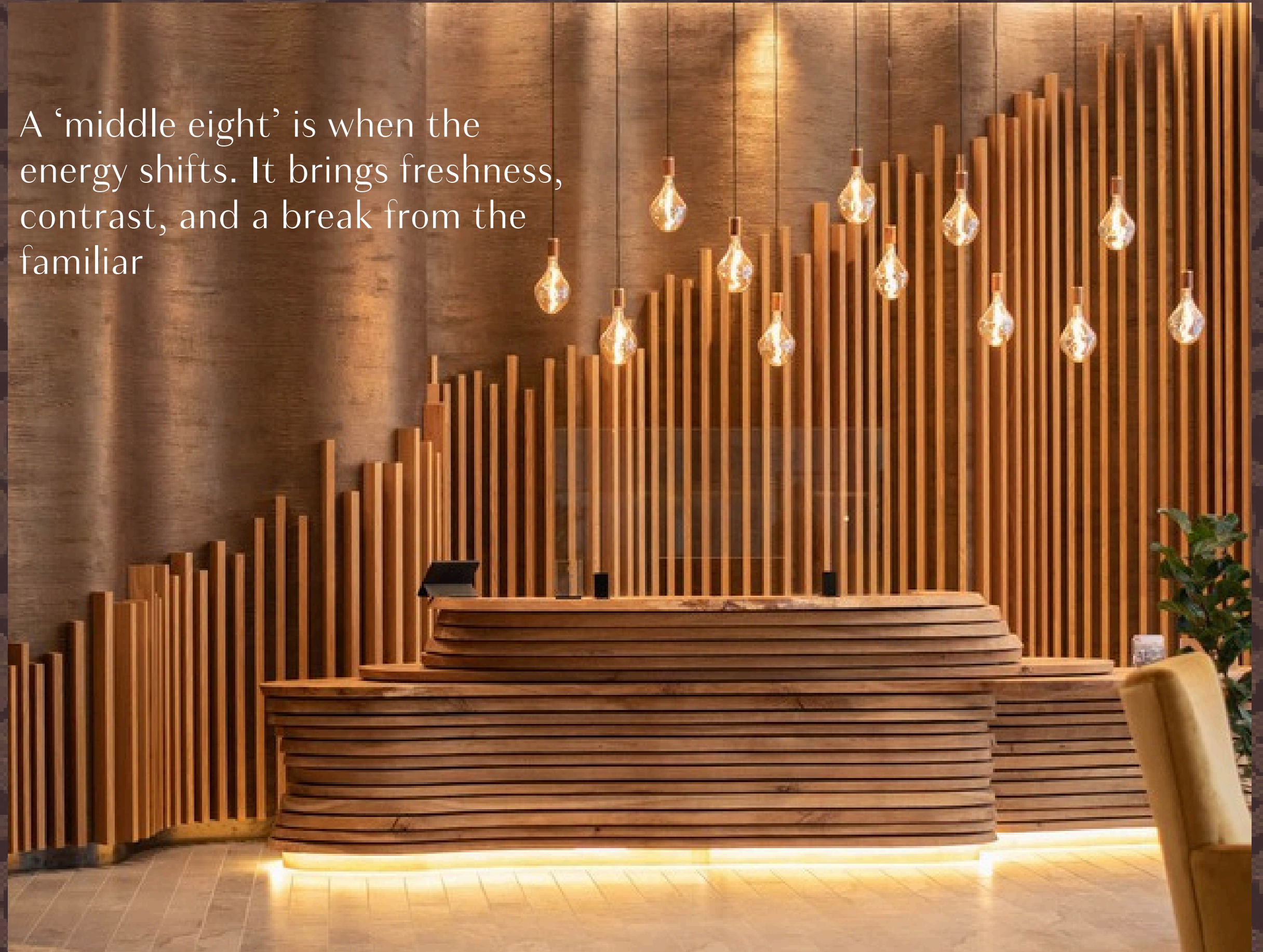
MIDDLE EIGHT

LONDON





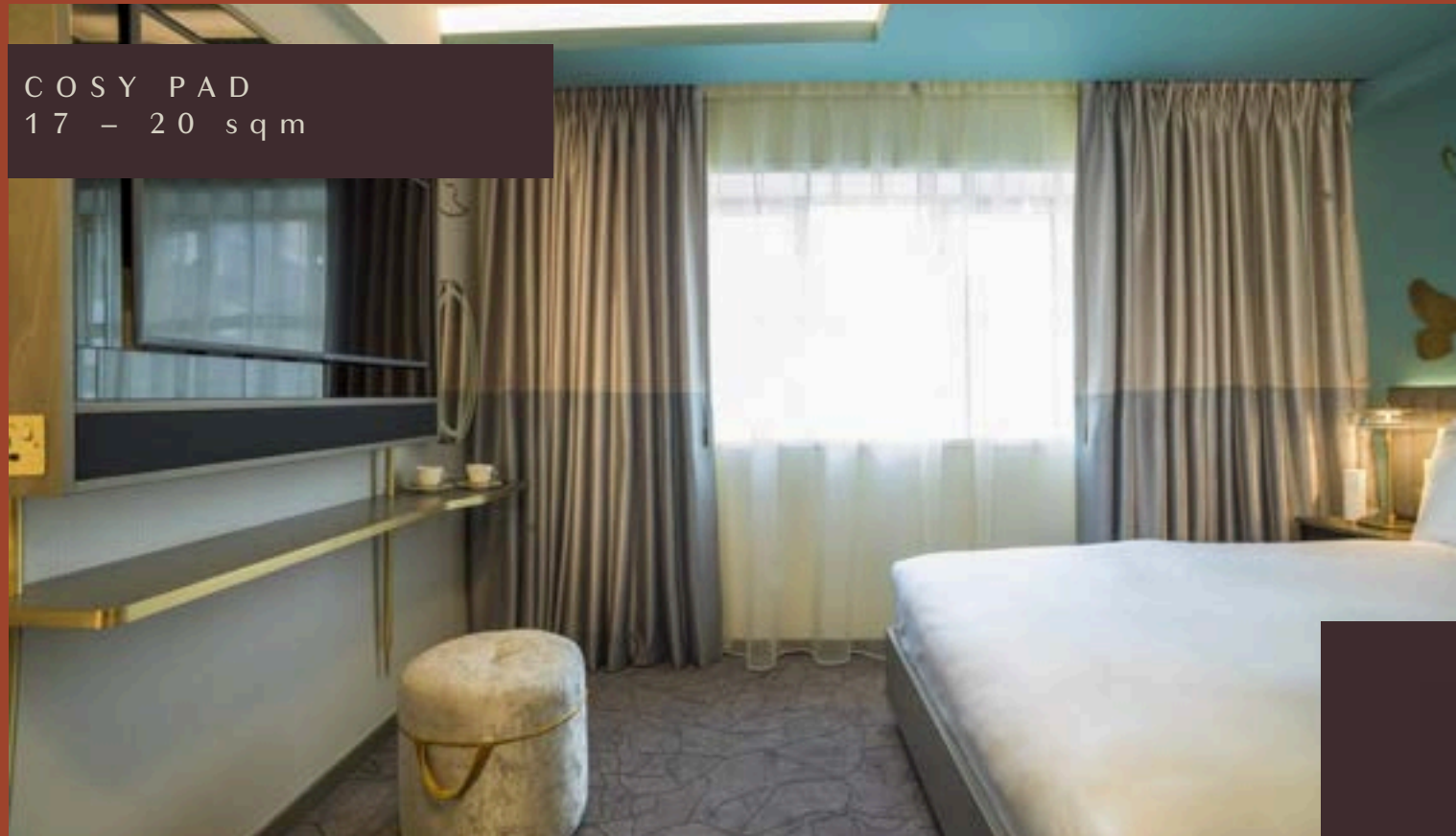
A 'middle eight' is when the energy shifts. It brings freshness, contrast, and a break from the familiar



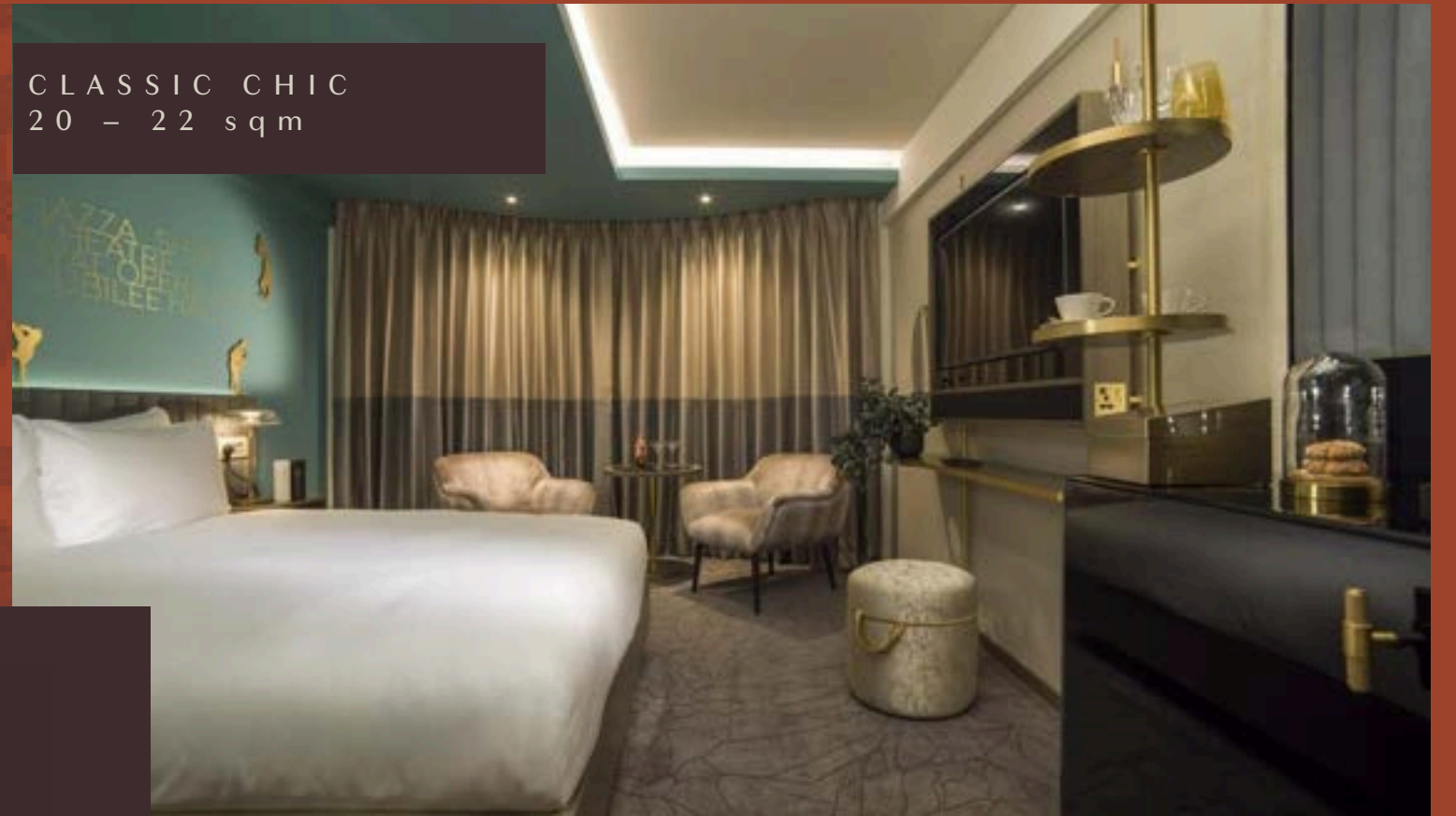


ROOM TYPE	SQ M	NO OF ROOMS	DESCRIPTION
Cosy Pad	17 - 20	8	
Classic Chic	20 - 22	19	Chair or pouffe seating
Urban Deluxe	20 - 22	73	Corner sofa with coffee table
Superior Street	20 - 24	53	Seating area consisting of corner sofa, table and pouffe
Executive Style	25 - 28	15	Seating area with sofa and chairs
Luxury Suites	55 - 91	12	Large comfortable seating area, dining area (in some suites), indoor garden or outside terrace

COSY PAD
17 - 20 sqm

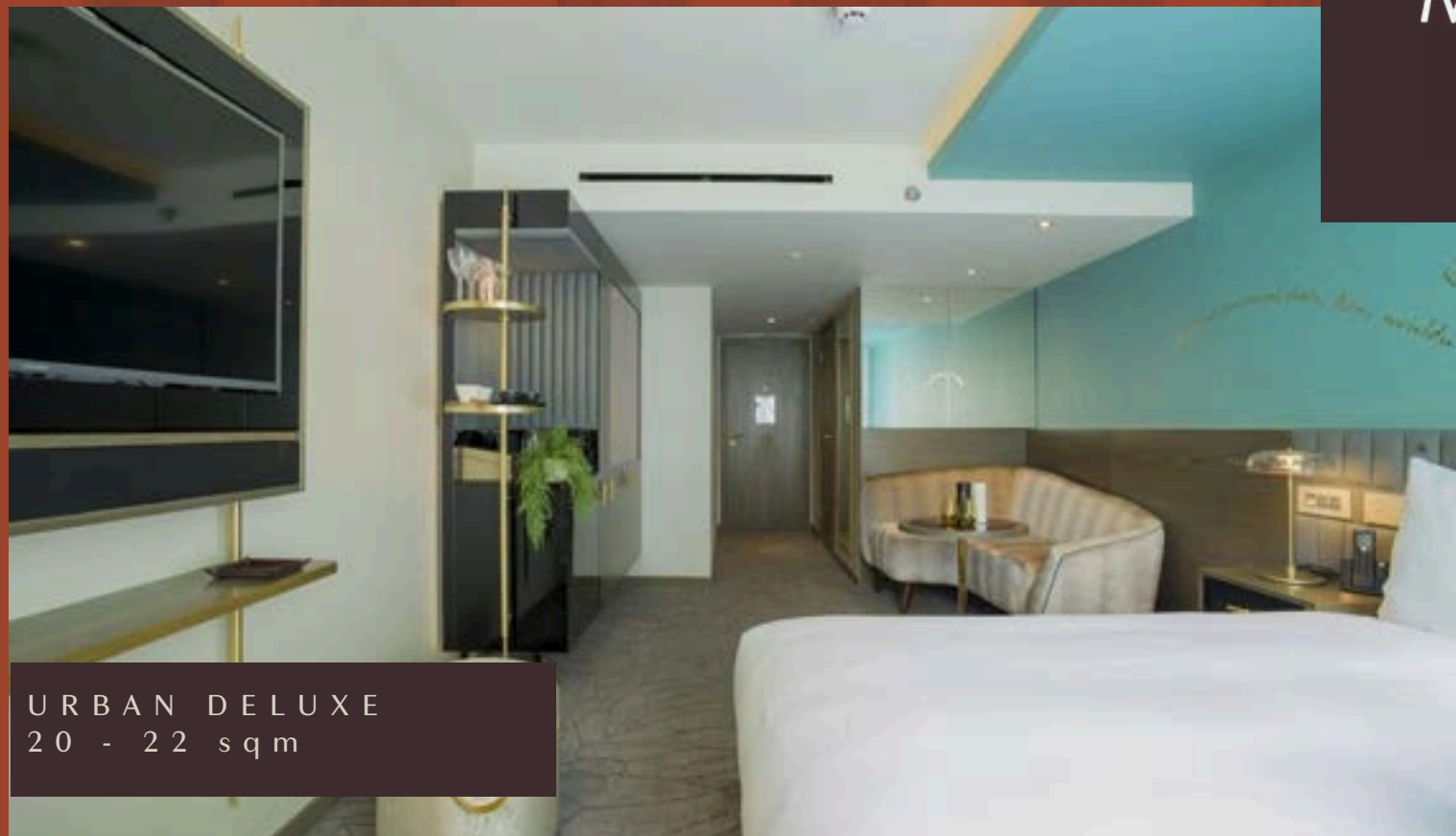


CLASSIC CHIC
20 - 22 sqm



MIDDLE
EIGHT
COVENT GARDEN

URBAN DELUXE
20 - 22 sqm



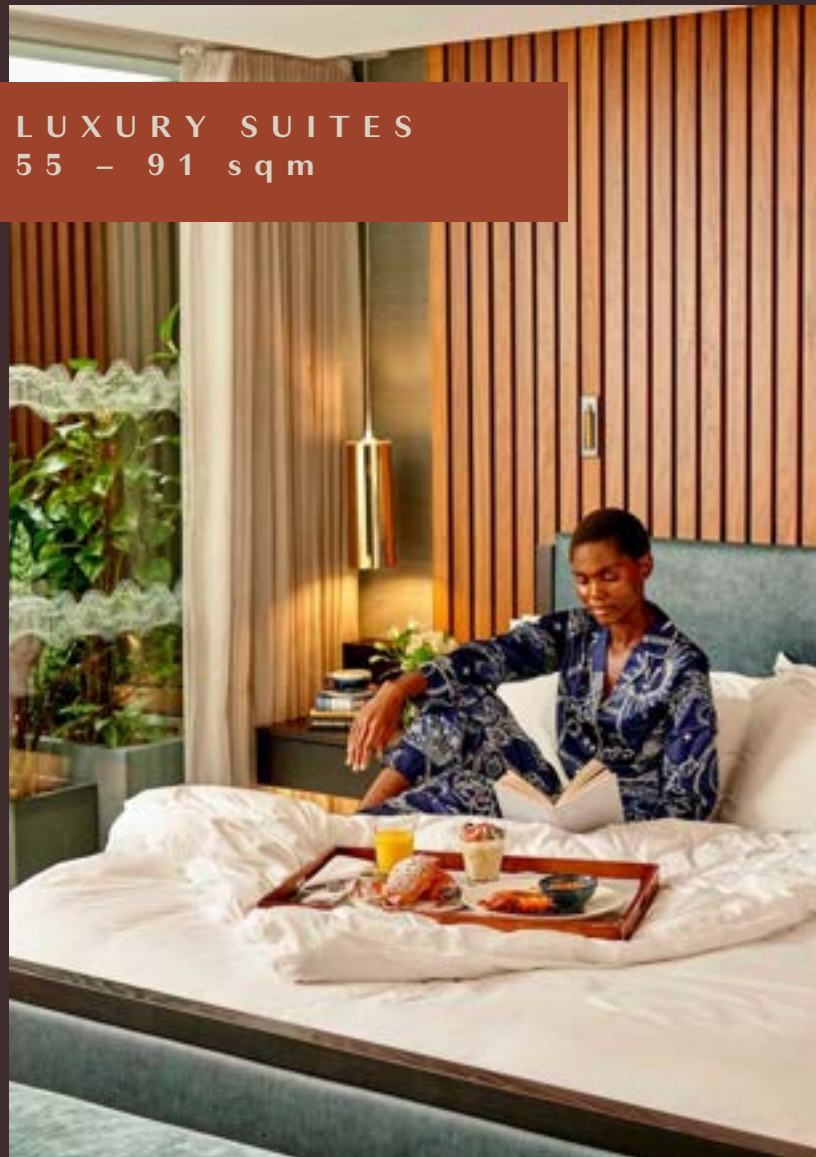
SUPERIOR STREET
20 - 24 sqm



EXECUTIVE STYLE
25 - 28 sqm



LUXURY SUITES
55 - 91 sqm




MIDDLE EIGHT
COVENT GARDEN

LUXURY SUITES
55 - 91 sqm



LUXURY SUITES
55 - 91 sqm



LUXURY SUITES
55 - 91 sqm





SYCAMORE
COVENT GARDEN





THE BALCONY
BAR AND LOUNGE





Events







Sustainability



The Neighbourhood

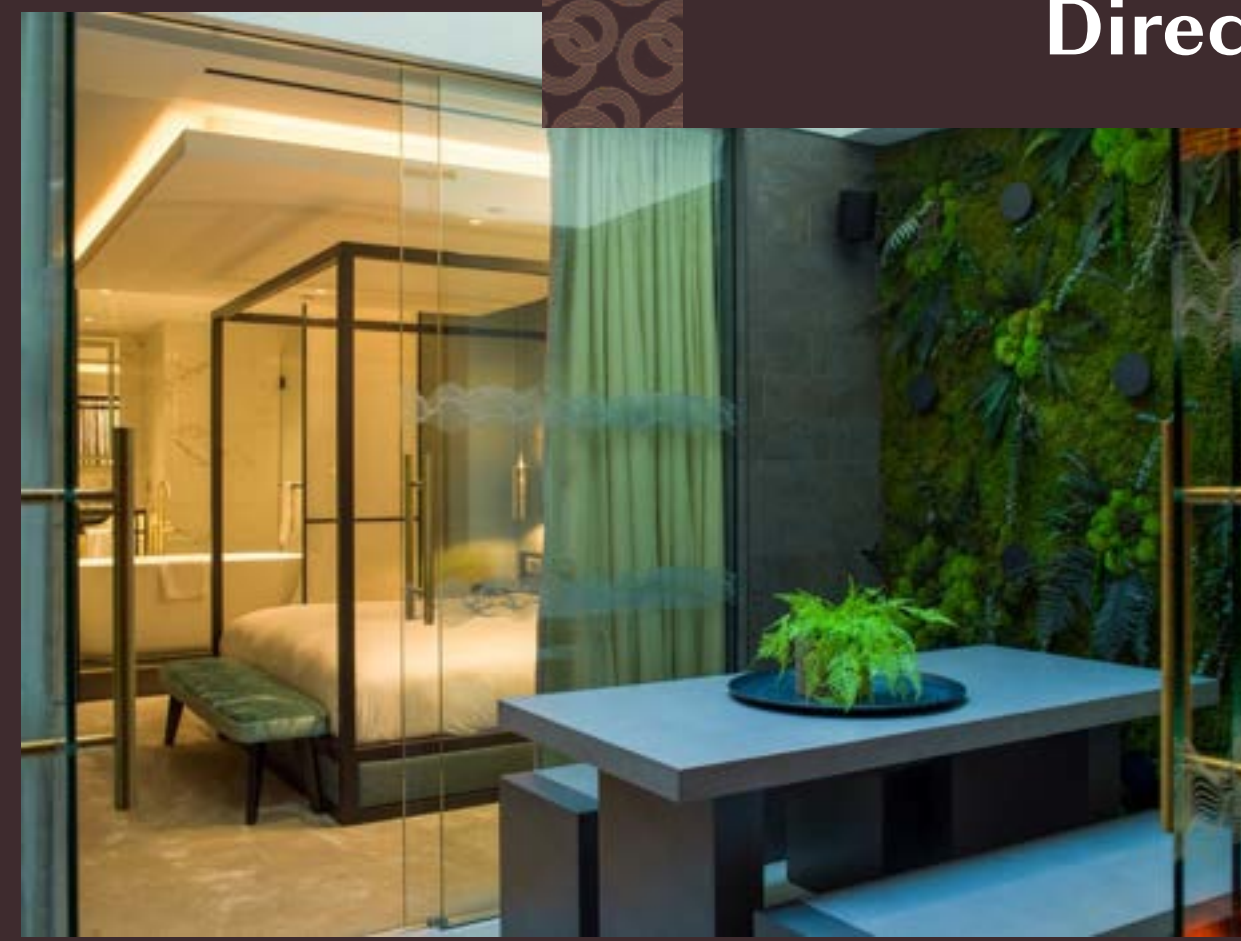
ENJOY FESTIVE CHARM AND CULTURAL SPARKLE



At Middle Eight, you're perfectly connected to the rest of London in the heart of Covent Garden, one of the city's most iconic and vibrant areas. Just steps from the hotel, you'll find the lively Piazza, filled with street performers, boutique shopping, and the characterful Apple Market. Explore the Royal Opera House, enjoy world-class theatre, or delve into the London Transport Museum, all within easy reach. Whether you're wandering through the charming streets of Seven Dials or unwinding in the nearby Embankment Gardens, Covent Garden offers the perfect blend of culture, creativity, and year-round charm.

- | | | | |
|---|--------------------------|----|--------------------------|
| 1 | LONDON TRANSPORT MUSEUM | 7 | ROYAL OPERA HOUSE |
| 2 | LINCOLN INN FIELDS | 8 | THEATRE ROYAL DRURY LANE |
| 3 | PICCADILLY CIRCUS | 9 | NOVELLO THEATRE |
| 4 | THE BRITISH MUSEUM | 10 | TRAFALGAR SQUARE |
| 5 | RUSSELL SQUARE | 11 | COVENT GARDEN |
| 6 | NEAL'S YARD | 12 | SOHO SQUARE GARDENS |
| H | HOLBORN STATION | C | COVENTGARDEN STATION |
| L | LEICESTER SQUARE STATION | | |

MIDDLE EIGHT, 66 GREAT QUEEN STREET , LONDON WC2B 5BX



Nina Aboagye
Director of Sales





MIDDLE EIGHT
COVENT GARDEN

MIDDLEEIGHT.COM