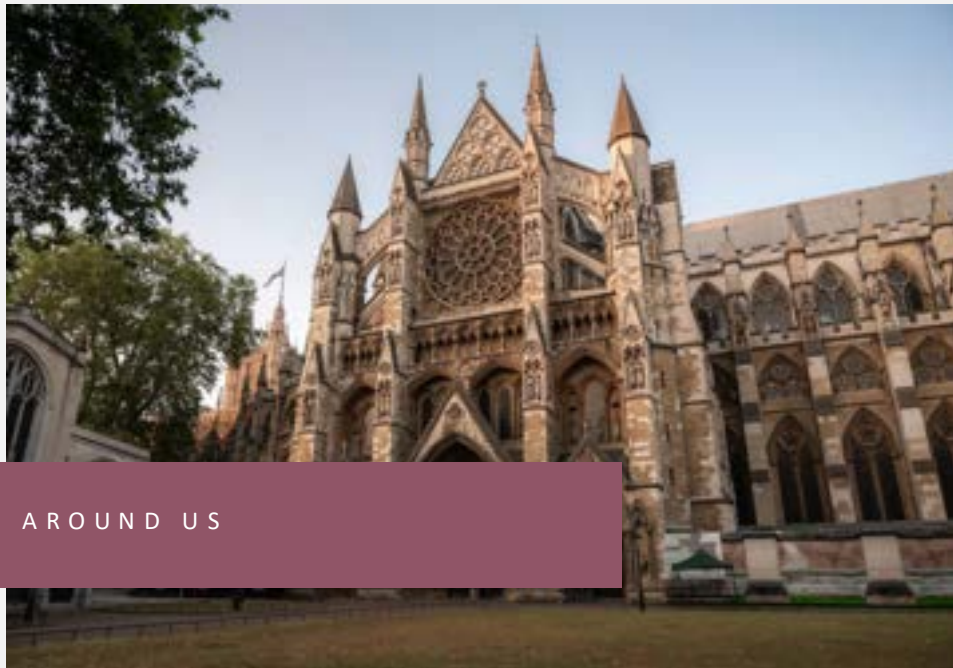
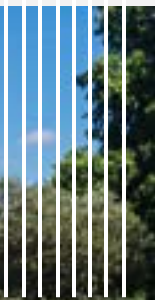


The image shows a sophisticated lounge area with plush orange velvet sofas and armchairs. A low wooden coffee table holds a martini glass and a chess set. In the background, there is a dark wood bar with bottles and a bookshelf. The room features dark wood paneling and a framed picture on the wall. The text 'The Guardsman' is prominently displayed in white, with 'BUCKINGHAM GATE' below it. Vertical white lines are used as decorative elements.

The Guardsman

BUCKINGHAM GATE



AROUND US



AN ICONIC DESTINATION

Enjoy Central London on your doorstep

1. BUCKINGHAM PALACE
2. ST JAMES'S PARK
3. BIG BEN
4. WESTMINSTER ABBEY
5. PALACE OF WESTMINSTER
6. TATE BRITAIN
7. VICTORIA PALACE THEATRE
8. WELLINGTON ARCH
9. THE GREEN PARK
10. TRAFALGAR SQUARE

OUR LOCATION





EXTERIOR & ENTRANCE



| THE GUARDSMAN HOTEL | SQM | SQ FT | TOTAL |
|---------------------|---------|-----------|-------|
| Queen Single | 13 | 139 | 4 |
| Superior Double | 17 - 19 | 183 - 205 | 4 |
| Deluxe Double | 20 - 22 | 215 - 237 | 31 |
| Executive Double | 25 - 28 | 269 - 301 | 10 |
| Guardsman | 25 - 28 | 269 - 301 | 4 |

| RESIDENCES | | | |
|-----------------------------|-------|------|---|
| The Copeland (1 bedroom) | 40 | 430 | 1 |
| The Horsbrugh (2 bedroom) | 47 | 506 | 1 |
| The Wintringham (2 bedroom) | 75.6 | 814 | 1 |
| The Summerskill (2 bedroom) | 99 | 995 | 1 |
| The Bondfield (2 bedroom) | 92.4 | 1066 | 1 |
| The Astor (3 bedroom) | 117.3 | 1262 | 1 |



ROOMS & RESIDENCES



QUEEN SINGLE
13 sqm





SUPERIOR DOUBLE
17 - 19 sqm





DELUXE DOUBLE
20 - 22 sqm





EXECUTIVE DOUBLE
25 - 28 sqm



GUARDSMAN
25 - 28 sqm



THE COPELAND RESIDENCE One
bedroom - 40 sqm



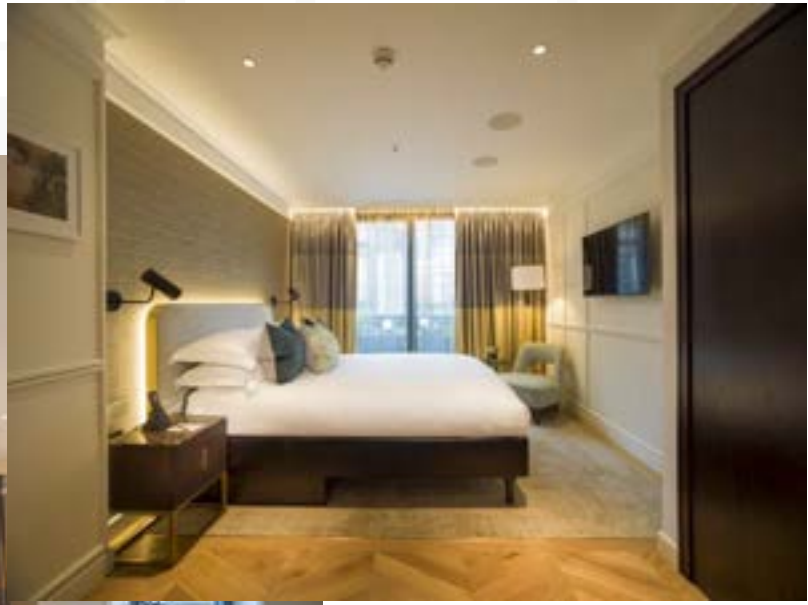
THE HORSBRUGH RESIDENCE
Two bedrooms - 47 sqm



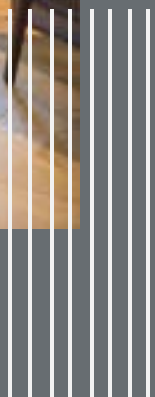
THE WINTRINGHAM RESIDENCE
Two bedrooms – 75.6 sqm

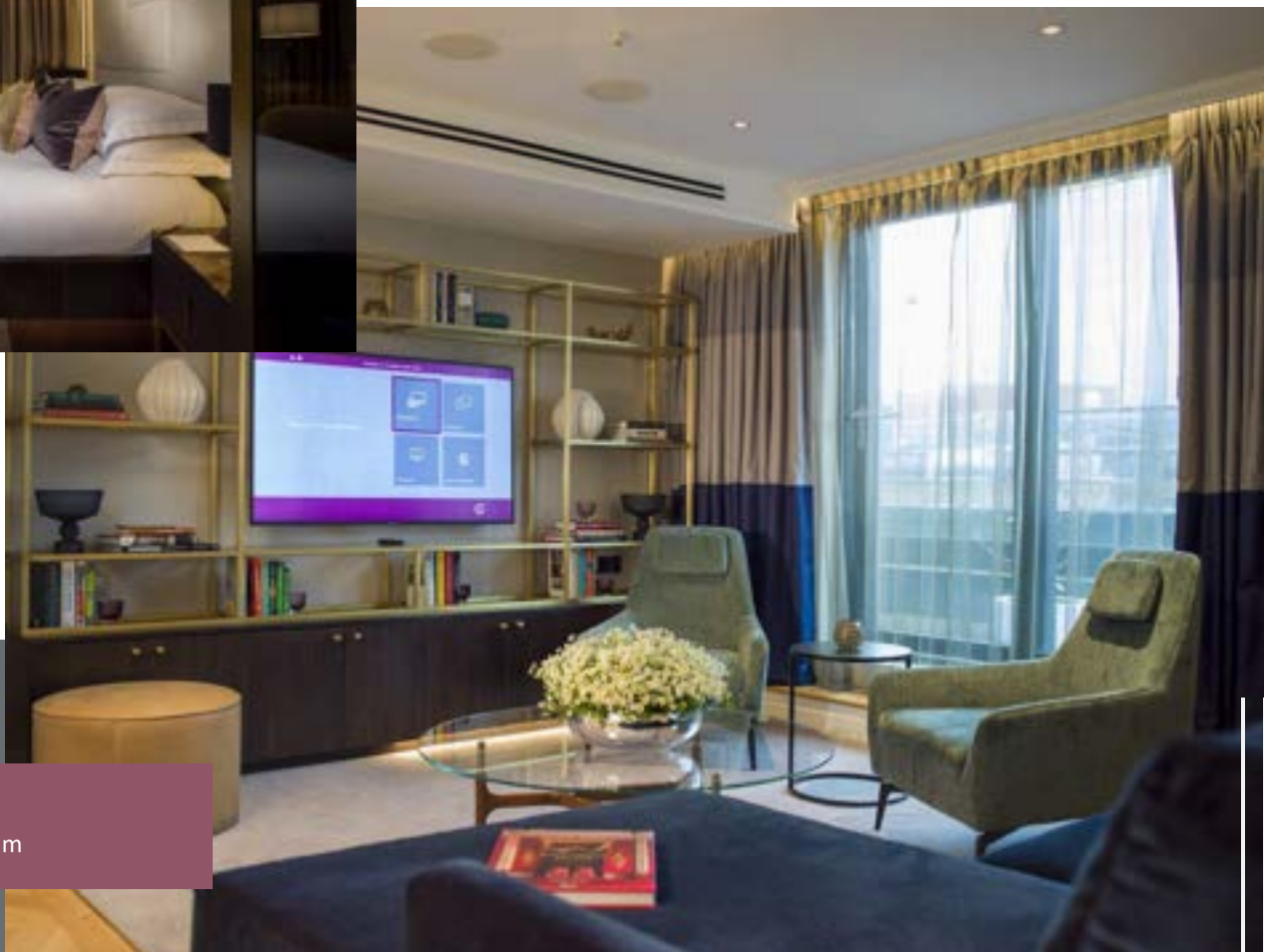
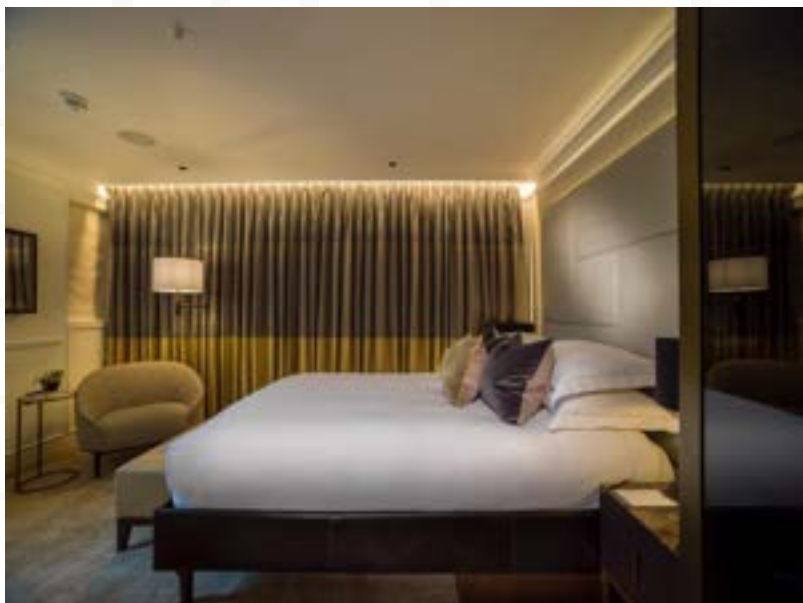


THE SUMMERSKILL RESIDENCE
Two bedrooms – 99 sqm



THE BONDFIELD RESIDENCE
Two bedrooms - 92.4 sqm





THE ASTOR RESIDENCE
Three bedrooms – 117.3 sqm



THE DINING ROOM





THE DINING ROOM





THE BAR



DRAWING ROOM





LIBRARY

THE GUARDSMAN

Our Sustainability Journey

In room power manager by key card slot

Eco mode air-conditioning

LED lights across the building

Movement sensor in corridors and staircases

Night walks ensuring all electrical equipment including computers and printers are off

Linen change every 3 days (guest have the option to choose for earlier change with a card)

Tree Hanger (our guest can choose not to have the room serviced at all)

Tersano Water (no use of chemicals) Stabilized Aqueous Ozone SAO® has no colour, toxins, additives, or artificial scents. It leaves no residue behind, is not harmful to your health, and does not negatively impact the environment.

Our team uses only water-based paints which causes less harm to the environment.

SUSTAINABILITY





The Guardsman
BUCKINGHAM GATE