

CRAFTED



Life-friendly HOTELS and CLUBS where you can be yourself and fill up on the GOOD STUFF.





WHAT IS CRAFTED AT POWDERMILLS?

Crafted at Powdermills is a life-friendly hotel and members club in East Sussex, UK, TN33 set on an estate of ancient woodland, streams, and a 7-acre lake alive with birdsong. Designed to make you feel good about life.



WHERE IS CRAFTED AT POWDERMILLS?



- Battle, East Sussex**
- 70 minutes by train from London
- 5 minutes from Battle Station
- 15 minutes to Hastings and the coast
- 60 minutes from Gatwick Airport
- 90 minutes from Heathrow Airport



CRAFT



WELLBEING



NATURE



FOOD



SOCIAL



PLAY

THESE SUPER SIX ARE OUR BRAND PILLARS





EVENTS & PARTIES

You can do a lot of things in 78 acres of lakeside woodland. Ideal venue for corporate retreats and car launches: get the right headspace for team-building events, leadership away days, boardroom meetings and strategy planning sessions, workations and company off-sites. We are the natural alternative to a standard event space. Exclusively hire the site: get the run of our bedrooms, lake and woods.





<p>BLACK BARN</p>	
<p>A big, open space that's whatever you need it to be. Fill it with flowers, fill it with people, or just fill it with noise. We can connect the space to the adjacent outdoor space if you want to take it outside.</p>	<p>Standing: 250 Seated: 180 Theatre style: 140 Cabaret style: 63</p>
<p>MEMBERS PDR</p>	
<p>For something a little more closed-door: a long table, good company, no interruptions.</p>	<p>Parlour seated: 20 Parlour cocktails: 30</p>
<p>THE GREEN ROOM</p>	
<p>When you're dressed to impress, maybe a big birthday or a formal work event. Members-only most nights, but yours if you ask nicely. Strong pours are made for those with good taste.</p>	<p>Seated: 40 Standing: 60 Outside terrace: 30</p>
<p>THE PARLOUR</p>	
<p>Best enjoyed with a drink in hand, either as your main space or somewhere to retreat to after dinner. Sofas, low lighting, time to kill.</p>	<p>Lounge style: 20-30</p>
<p>THE LIBRARY</p>	
<p>A place for dinners that stretch into the night. Seriously stylish, but not serious.</p>	<p>Standing: 20 Seated: 18 Theatre style: 18</p>



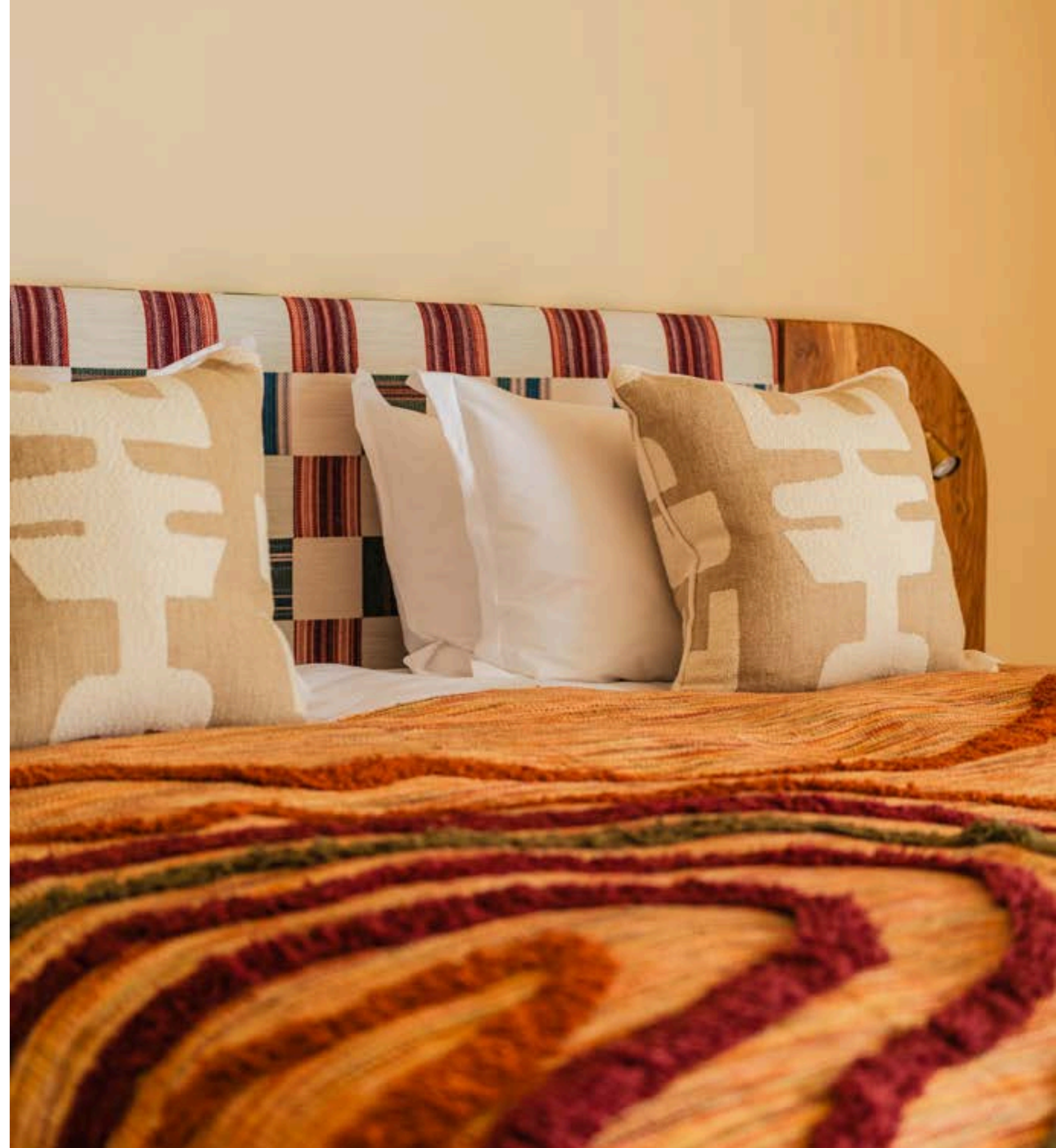
NOMADIC EVENT SPACES

Nature is the new nightclub, come play in it. This could be diners in the outdoor barns, drinks by the lake, parties in the Kitchen Garden.... How an event should feel: alive, original, a little unexpected.

Note: our 78 acres are open for your interpretation and inspiration. It's best to speak to us if you want more information on what's possible.

STAYS

There are big beds, strong showers, comfortable chairs, well-lit desks, and a blend of vintage and modern furnishings. Artwork from our neighbours keeps things original, handmade pieces keep things crafted.





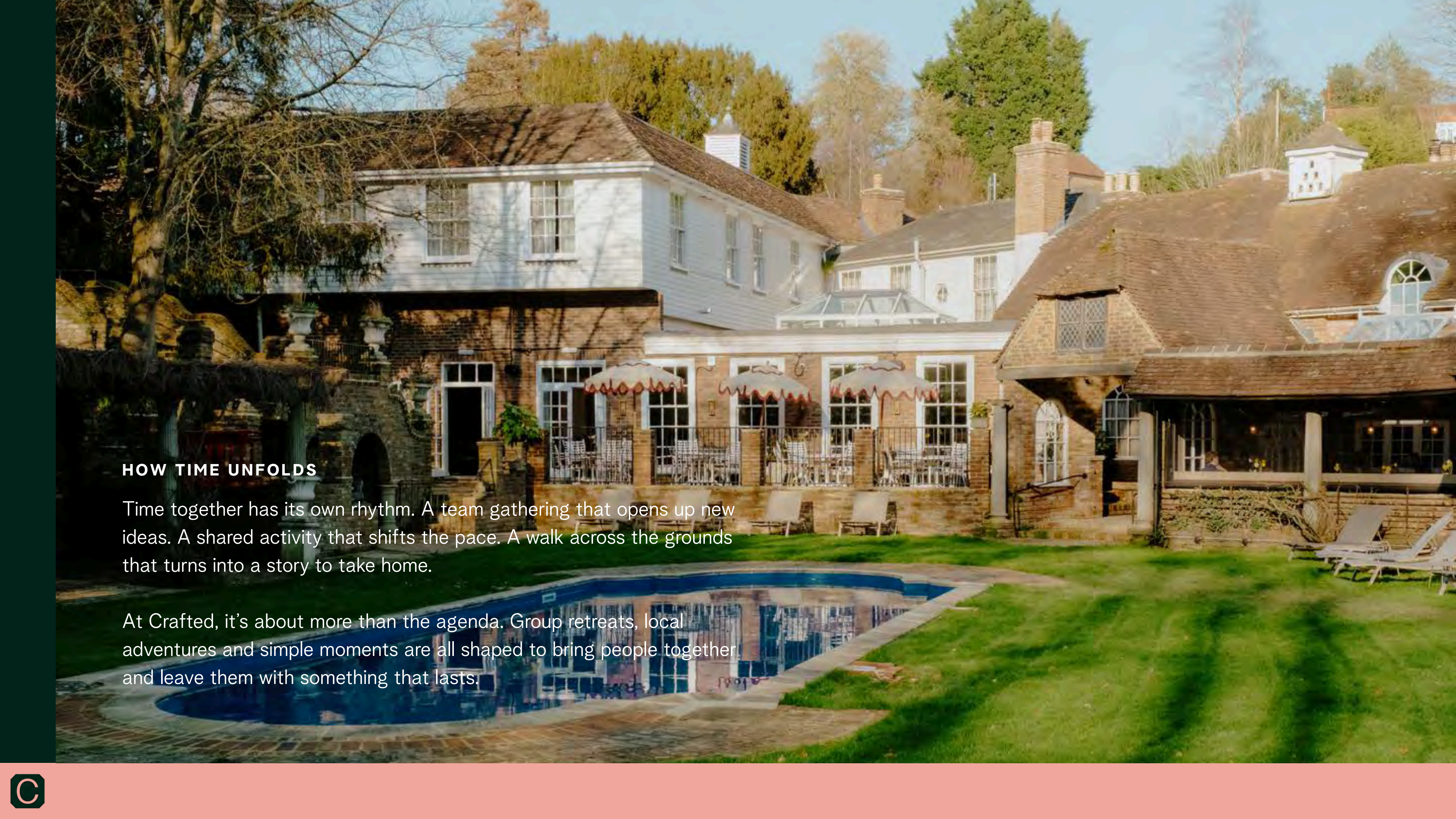
MAIN HOUSE	QUANTITY	SQM
Cosy	7	15-20
Heritage	13	20-25
Junior Suite	7	32-38
Suite	4	18-35
BLACK BARN	QUANTITY	SQM
Cosy	1	15-20
Junior Suite	7	32-38
Suite	4	18-35
BRICK BARN	QUANTITY	SQM
Suite	5	32-38
Junior Suite	2	18-35
COTTAGES	BEDROOMS	SQM
Ash	3	100
Oak	3	151
The Lake House	5	193

COTTAGES

A home to call your own for company takeovers, birthday celebrations or family occasions.

There are three to choose from: Ash (3 bed), Oak (3 bed), the Lake House (5 bed). They all have their own kitchen and living areas. The Lake House also has a deck onto the lake and a private garden and pool.





HOW TIME UNFOLDS

Time together has its own rhythm. A team gathering that opens up new ideas. A shared activity that shifts the pace. A walk across the grounds that turns into a story to take home.

At Crafted, it's about more than the agenda. Group retreats, local adventures and simple moments are all shaped to bring people together and leave them with something that lasts.



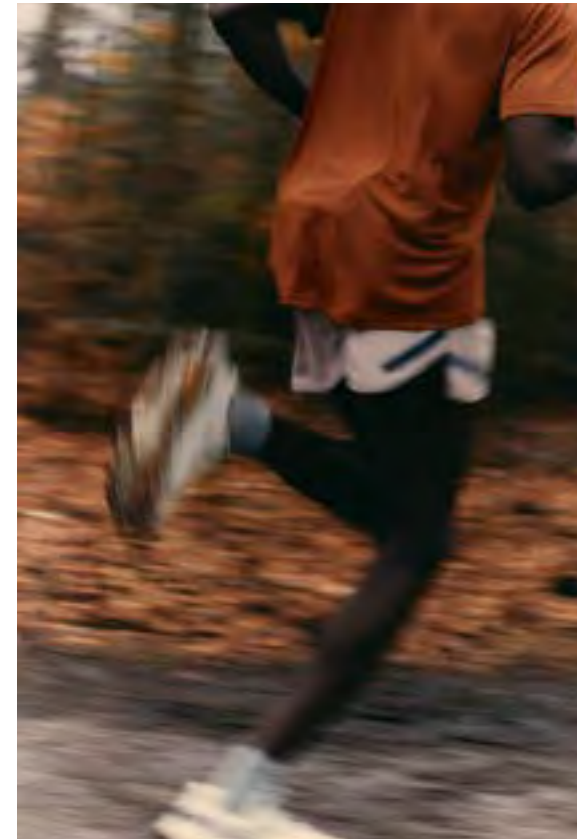
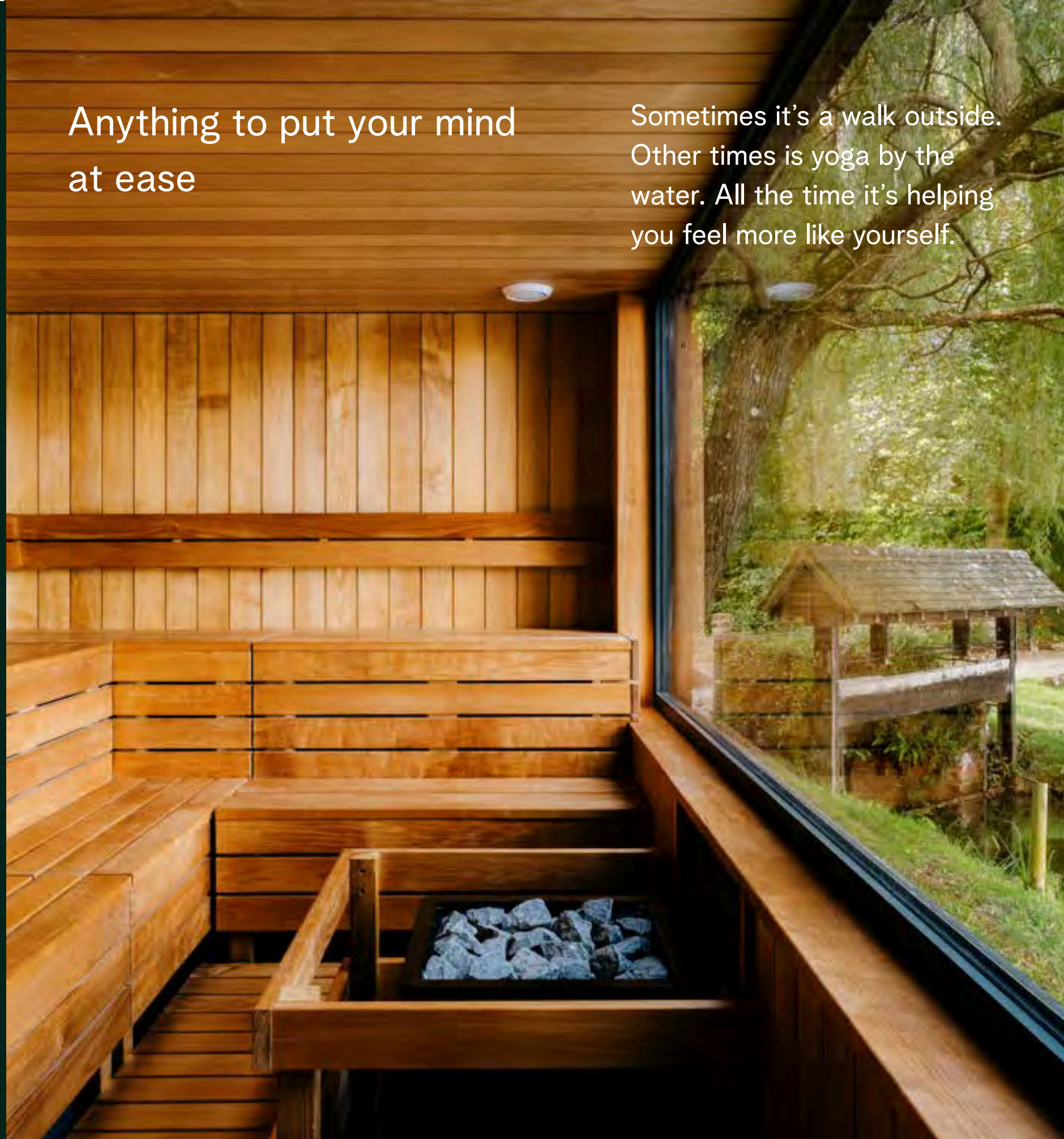
Make something with your hands

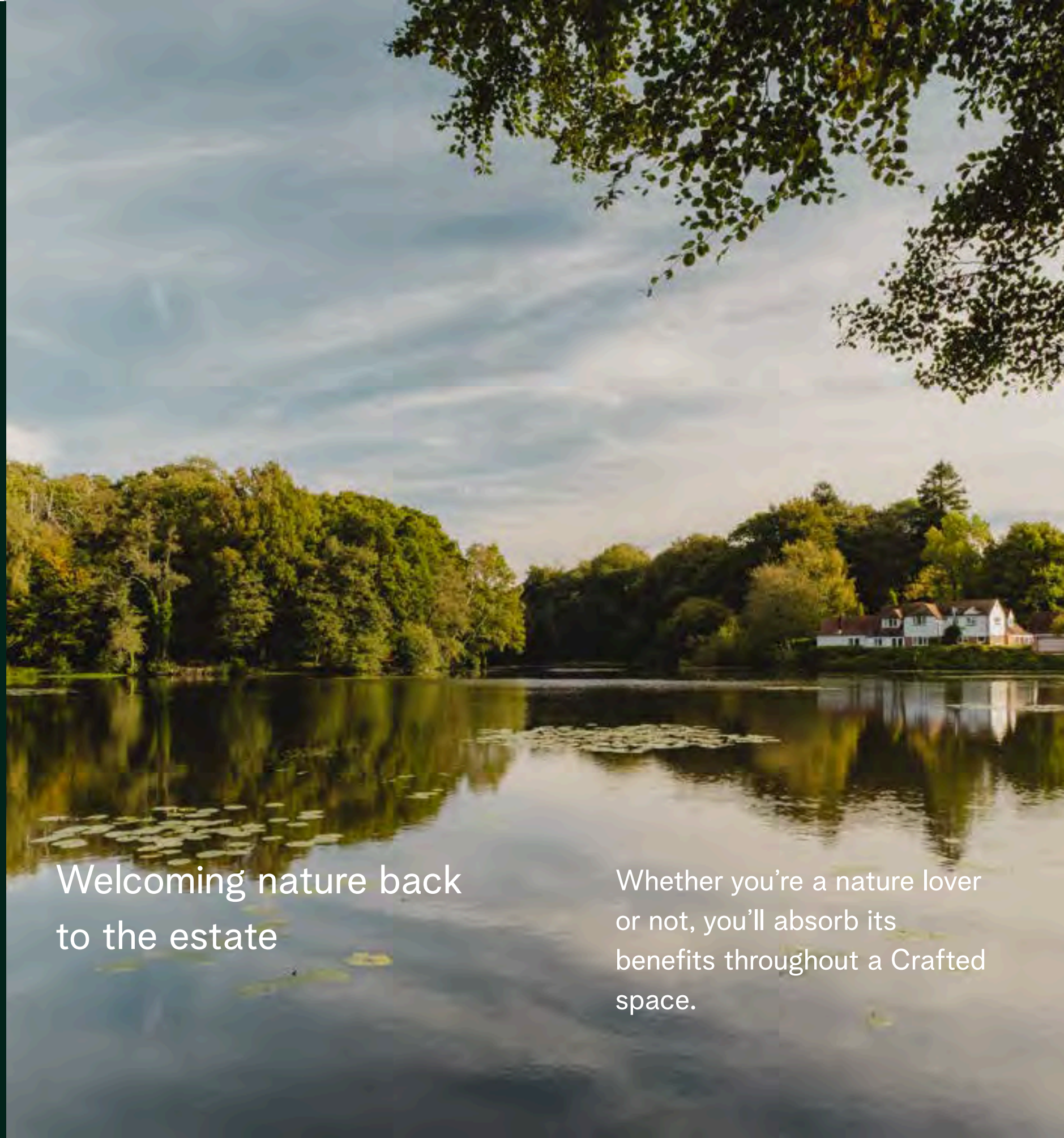
There's art to see on every wall and skills to learn in every workshop



Anything to put your mind
at ease

Sometimes it's a walk outside.
Other times is yoga by the
water. All the time it's helping
you feel more like yourself.

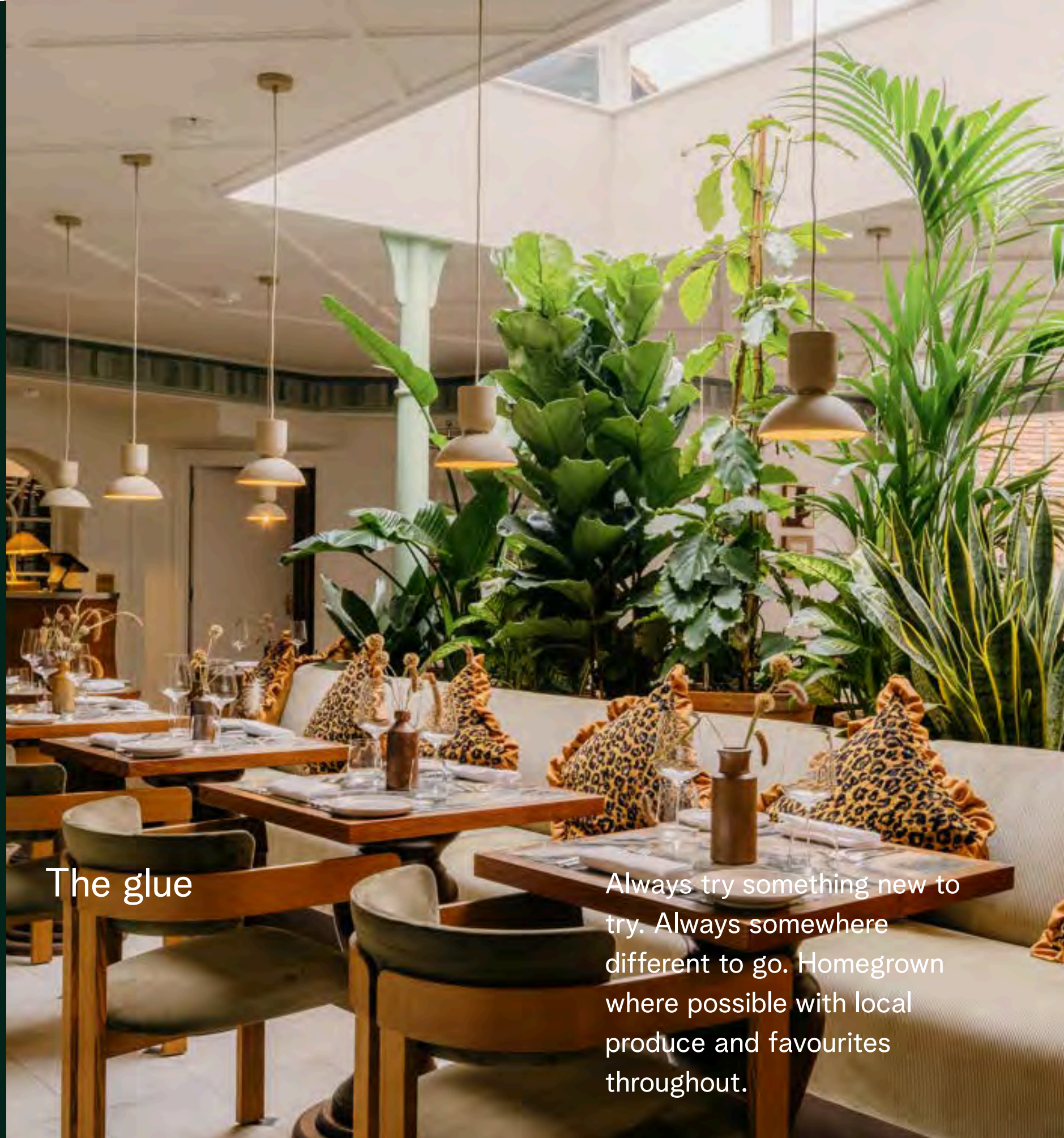




Welcoming nature back
to the estate

Whether you're a nature lover
or not, you'll absorb its
benefits throughout a Crafted
space.





The glue

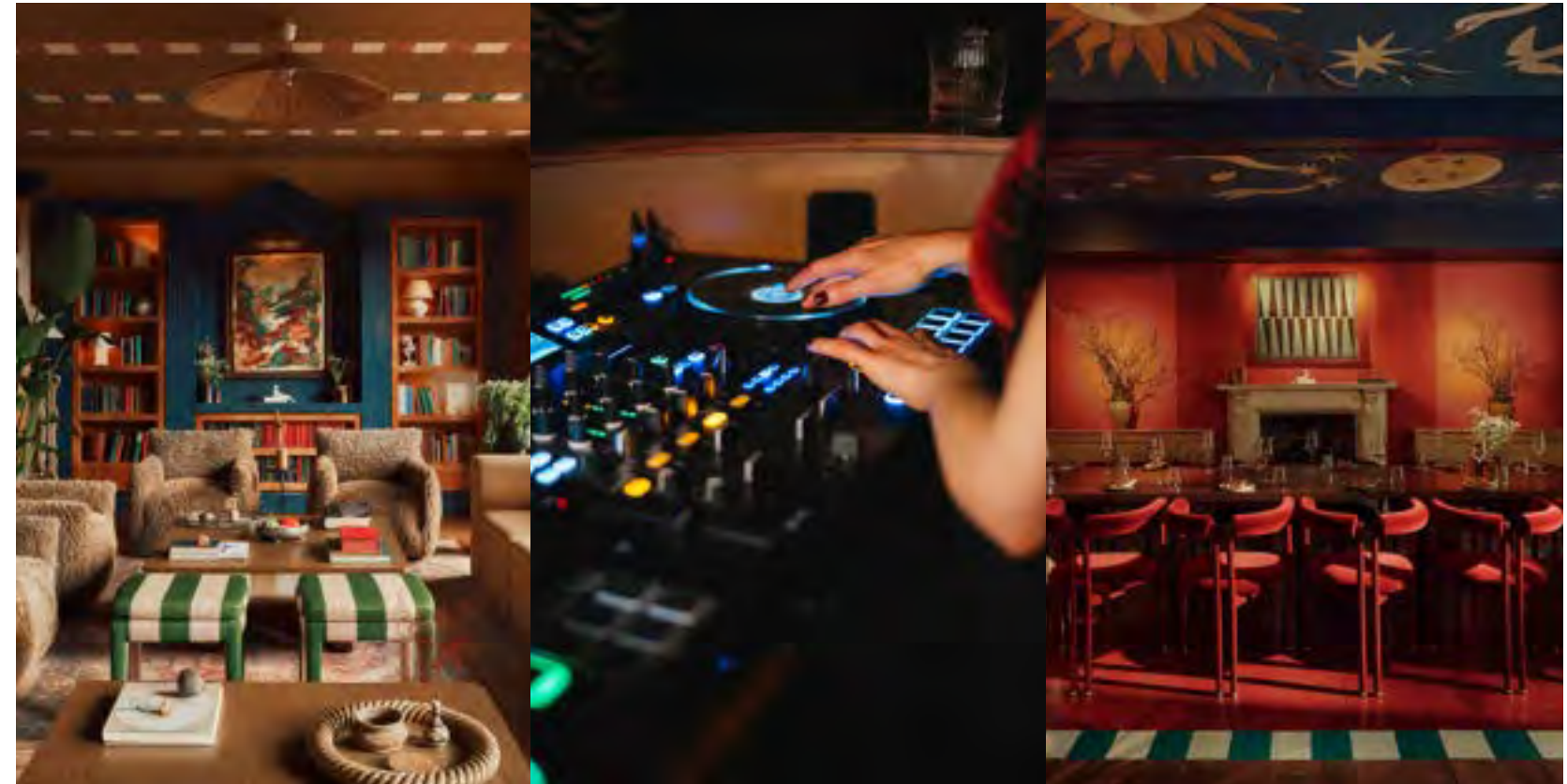
Always try something new to try. Always somewhere different to go. Homegrown where possible with local produce and favourites throughout.

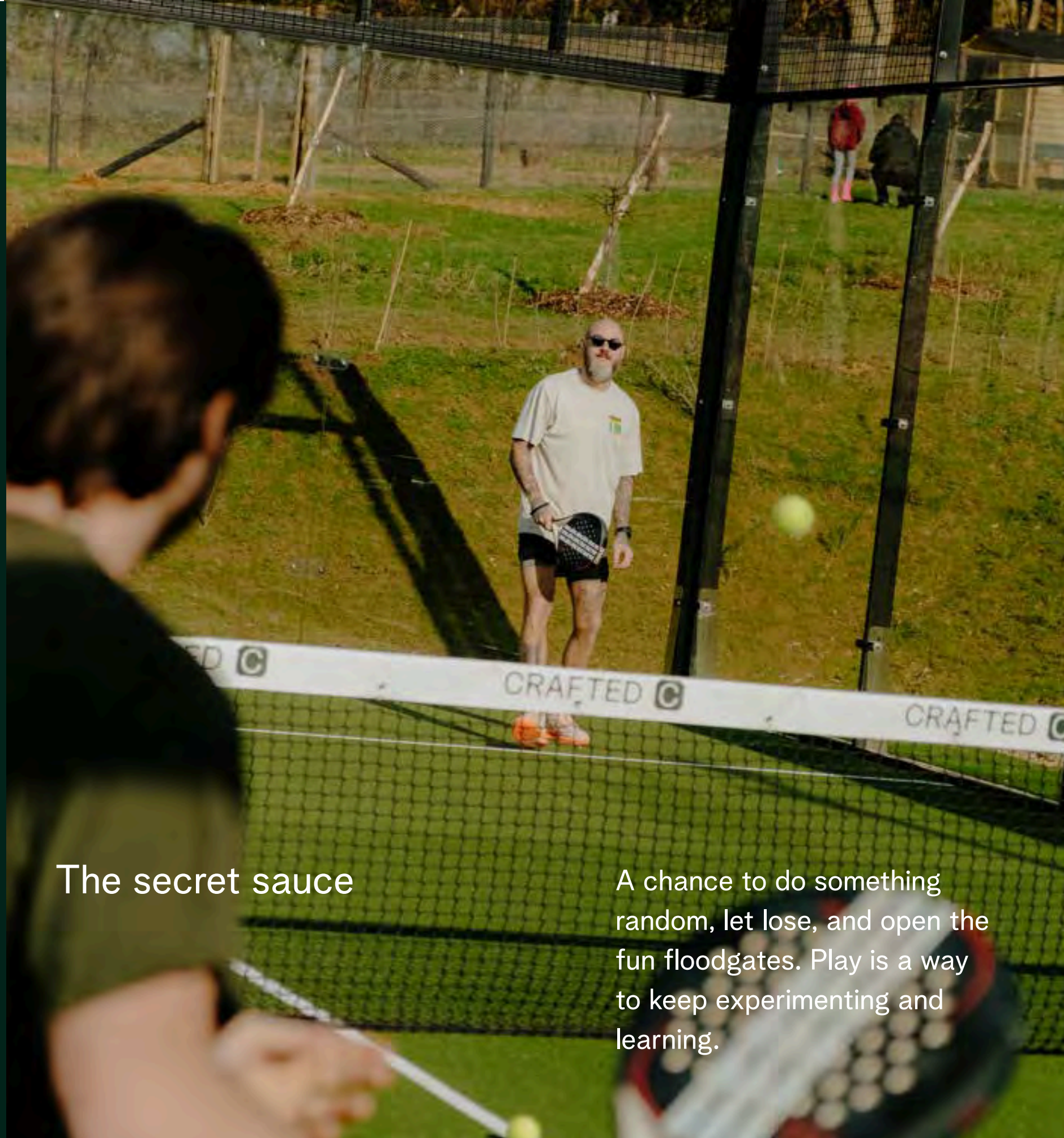




Nothing formal or formulaic

Make new friends that quickly feel like old ones. Just a chance to get to know a neighbour, have a good conversation and maybe help someone along the way.





The secret sauce

A chance to do something random, let loose, and open the fun floodgates. Play is a way to keep experimenting and learning.





LOCAL ADVENTURES

Beyond the grounds, Sussex offers vineyards worth lingering in, fairways worth walking, and trails that lead to stories you'll take home with you.

Step Outside

East Sussex invites a slower pace, a place to reconnect with nature, craft and good company. From vineyards to coastlines, country pursuits to woodland trails, we'll help you shape days worth remembering.

Battle Abbey & the 1066 Country Walk

Just minutes from Crafted, Battle Abbey offers one of England's most iconic historic sites, with grounds rich in story and space to explore. Pair it with stretches of the 1066 walking route for fresh air, countryside views and a change of pace between meetings or after lunch.

Sussex Winelands

Award-winning vineyards and expressive English wines: Oastbrook's cult-status tours, Oxney Organic's sustainable craft, and Artelium shaped by artistry in the South Downs.

Walking the Weald

Ancient woods, hilltop paths and coastal tracks, walk, breathe, wander.

Waters & Wilds

Swim, sail, paddle or kite, the coastline's full of ways to dive in.

Active Pursuits

Clay shooting, golf, horse riding, fishing and watersports, sea swimming, Sussex slows you down while keeping it exciting.



A NOTE ON SUSTAINABILITY: DOING OUR BIT

At Crafted at Powdermills, sustainability isn't an add-on, it's woven into how we live, host, and restore. The land shapes the stay, and by working with it (not against it), we can create a place that feels good today and lasts tomorrow.

WELCOMING NATURE BACK

The woods are ancient, the meadows restless, and water moves where it pleases. With care, this place can hum with life again: nightingales in the trees, dormice in the hedges, kingfishers flashing blue over streams. Free-roaming cattle shape wildflower meadows, inviting insects and pollinators to thrive. By stepping out of nature's way, we're letting the land rebuild, rebalance, and return to life.

WATER & CLIMATE CARE

Nearly a quarter of the estate is water, ponds, lakes, wet woodland. Restoring these habitats mirrors wild Britain before agriculture, creating space for species to come back. Healthy soil and thriving vegetation, will also lock away carbon, so every reedbed restored and tree planted plays its quiet part in tackling climate change.

CRAFTED, IN THEIR WORDS

“Crafted at Powdermills, in Battle, close to the fashion bohemians and pagans of Hastings, is offering it three hours away in Sussex...There’s nothing else like it nearby...it struck me as a place with wild potential – 90 minutes on the train from London, in a gorgeous historic building that’s been brought back to life, with enough spare land to open all kinds of things.”

-Mark C.Flaherty The Telegraph (The best British hotels of 2025)

“A patchwork of makers, doers and dreamers come together at this wellbeing-centric hotel and members’ club...And just as in the hotel’s design motif of the patchwork quilt, it all comes together under King’s guiding principles of comfort and choice: the pottery sessions and artist residencies, foraging walks and wild swimming, DJ sets and Sunday roasts.”

-Condé Nast Traveler

“This lakeside hotel is East Sussex’s most stylish place to stay”

-Jenny Coad, The Times

“Why the UK’s newest country retreat is placing craft at its core...Crafted at Powdermills is an ambitious new members’ club and retreat deep in the East Sussex countryside...it aims to root itself in the local landscape and its community of makers.”

-Ali Morris, Wallpaper

“...an imaginative take on the country-house retreat. With a focus on rest and creativity, it hopes to attract both weekenders and locals. Craft is at its core, from the furniture...to workshops...Nature lovers can take a dip in the lake or forest bathe during a yoga class.”

-House & Garden

“Crafted at Powdermills doesn’t feel like a traditional wellness destination – and that’s exactly the point... it’s redefining the modern members’ club as somewhere you can work, eat well, move, swim, create, and feel part of a community.”

-Tor West, SheerLuxe

The Telegraph

Condé Nast
Traveler

HOUSE
& GARDEN

THE



TIMES

SHEERLUXE



PWDR



SEE YOU BY THE LAKE.

CONTACT OUR TEAM FOR MORE DETAILS

c.judge@staycrafted.com | +44 (0) 1424 775511

www.staycrafted.com | @staycrafted_

Crafted at Powdermills, Powdermill Ln, East Sussex,
Battle TN33 0SP

